

HEDYOTIS TAIWANENSE (RUBIACEAE), A NEW SPECIES FROM TAIWAN

SHING-FAN HUANG* and JIN MURATA**

(Received for publication May 2, 1987 and in revised form May 31, 1987)

Abstract: In this work, the description and distribution map of *Hedyotis taiwanense* S. F. Huang & J. Murata are given.

Hedyotis taiwanense S. F. Huang & J. Murata, sp. nov.

H. strigulosa Bartl. var. *parvifolia* (Hook. et Arn.) Yamazaki in Journ. Jap. Bot. 58: 284. 1983, p. p.

Herba basis ramulosa decumbens. Ramulus glaber angulatus. Folia opposita ovata integra, 8–12 mm longa, 4–6 mm lata, translata in bracteam supra gradatim; apex obtusus cum acumine; basis rotundata vel attenuata. Stipula interpetiolata triangulata hirsuta, 1 mm longa. Flos solitarius, pedicellus 0–7 mm longus in florenti statu, 9–21 mm longus in fructifro statu. Calycis tubus campanulatus, 2 mm longus, lobus 4 vel 5, ovato-triangulatus hirsutus. Corolla tubiformis; lobus 4, triangulato-ovatus, 1 mm longus, pilus brevis extus, longus intorsum. Stamina 4, 0.5 mm longa, fila 0.2 mm longa, antherae apiculatae. Ovarium calycium connatus. Stylus 5 mm longus. Stigma emarginatum vel bifidum, Fructus capsularis ellipsoideus, 5 mm longus, 2.5 mm latus. Semen nigro-brunneus angulatusque clathratus, circa 0.5 mm longus.

A decumbent herb. Stem branching, glabrous, angled. Leaves opposite, thick herbaceous, entire, ovate, 8–12 mm long, 4–6 mm wide, the apex obtuse, apiculate, the base obtuse to cuneate, the upper leaves gradually transformed into bracts. Stipules 2, 1 mm long, triangular with stiff hair. Flower solitary, placed in one of the axils of a leaf pair, pedicel 0–7 mm long in flowering state, 9–21 mm long in fruting state. Calyx 2 mm long, lobes 4 or 5, ovate-triangular with stiff hair outside. Corolla 1.7 mm long, lobes 4, triangular-ovate, 1 mm long, with short stiff hair outside and long hair inside. Stamens 4, exerted at the base of corolla, alternate with its lobes, 0.5 mm long, filament 0.2 mm long, anther apiculate. Ovary connate with calyx, style 5 mm long, stigma emarginate or bifid. Capsule ellipsoidal, 5 mm long, 2.5 mm wide. Seeds blackish brown, angled, clathrate, about 0.5 mm long.

Specimens examined

Pingtung: Chiupeng Village, S. F. Huang & T. C. Huang 3729 (Holotype TAI; Isotype TI); Chialoshui, C. M. Kuo s. n. 1978 (TI).

Taitung: Green Island, K. Mori s. n. 1907 (TAI), Y. Kudo & K. Mori s. n. 1930 (TAI).

Hedyotis taiwanense is similar to *H. strigulosa* Bartl. and *H. biflora* (L.) Lamk.. In his study on *Hedyotis strigulosa* and alies, Yamazaki (1983) cited a specimen of present species under *H. strigulosa* Bartl. var. *parvifolia* (Hook. et Arn.) Yamazaki. The present species is distinct, however, in having obtuse cells on leaves's margin under microscope

* 黄星凡, Research assistant, Department of Botany, National Taiwan University.

** 邑田仁, Herbarium assistant, Botanical Gardens, The University of Tokyo.

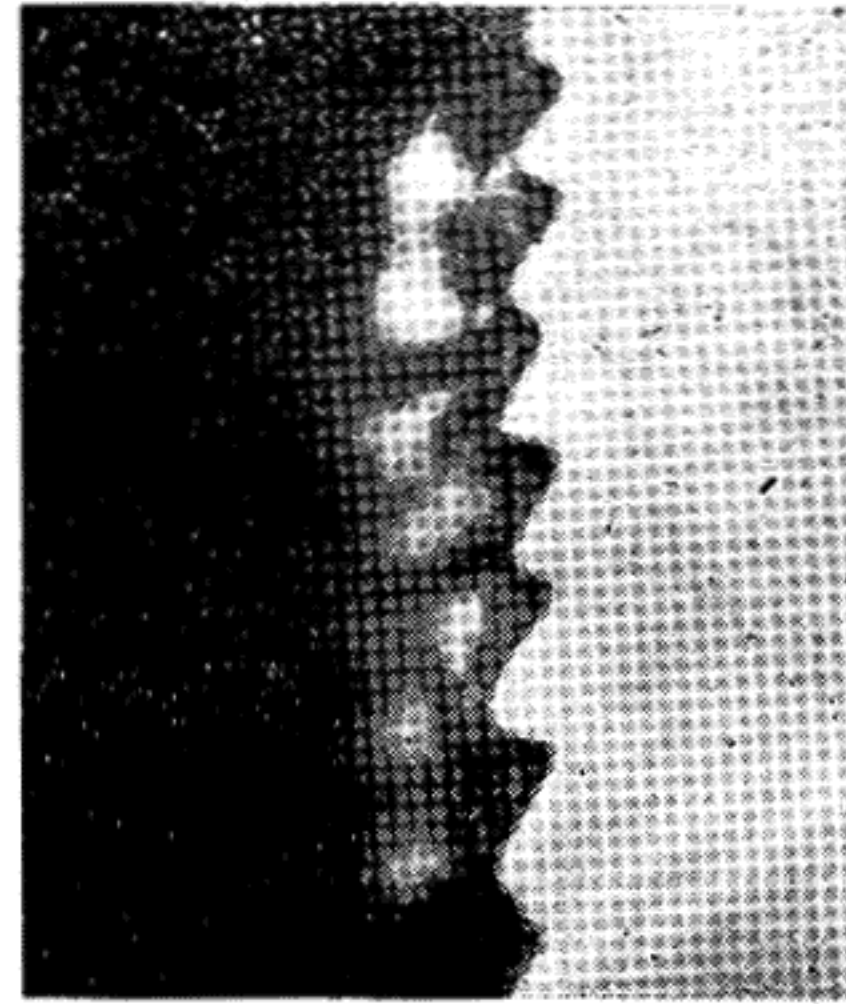


Fig. 1. Marginal part of a leaf of *Hedyotis taiwanense* (S. F. Huang & T. C. Huang 3729). $\times 100$.

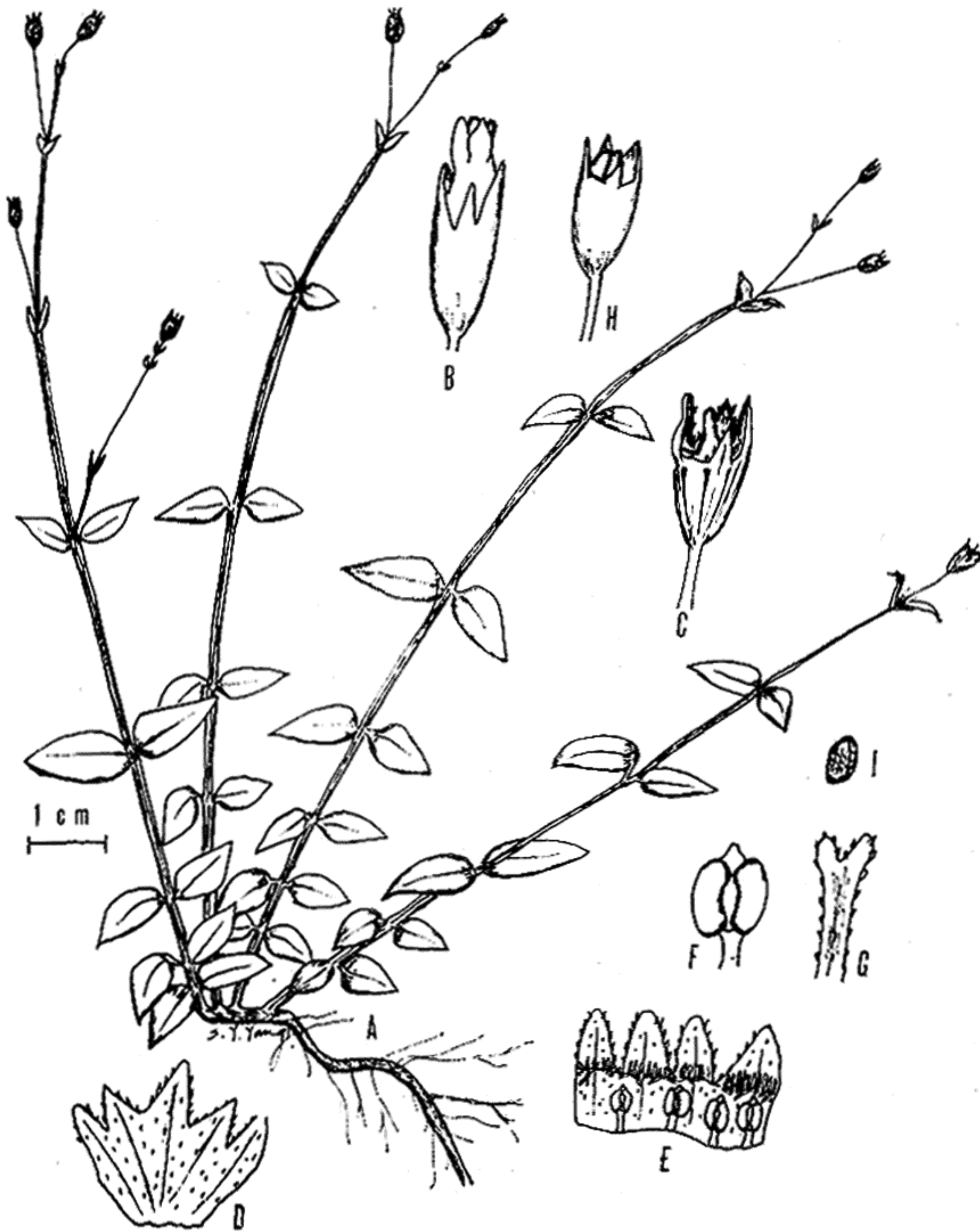
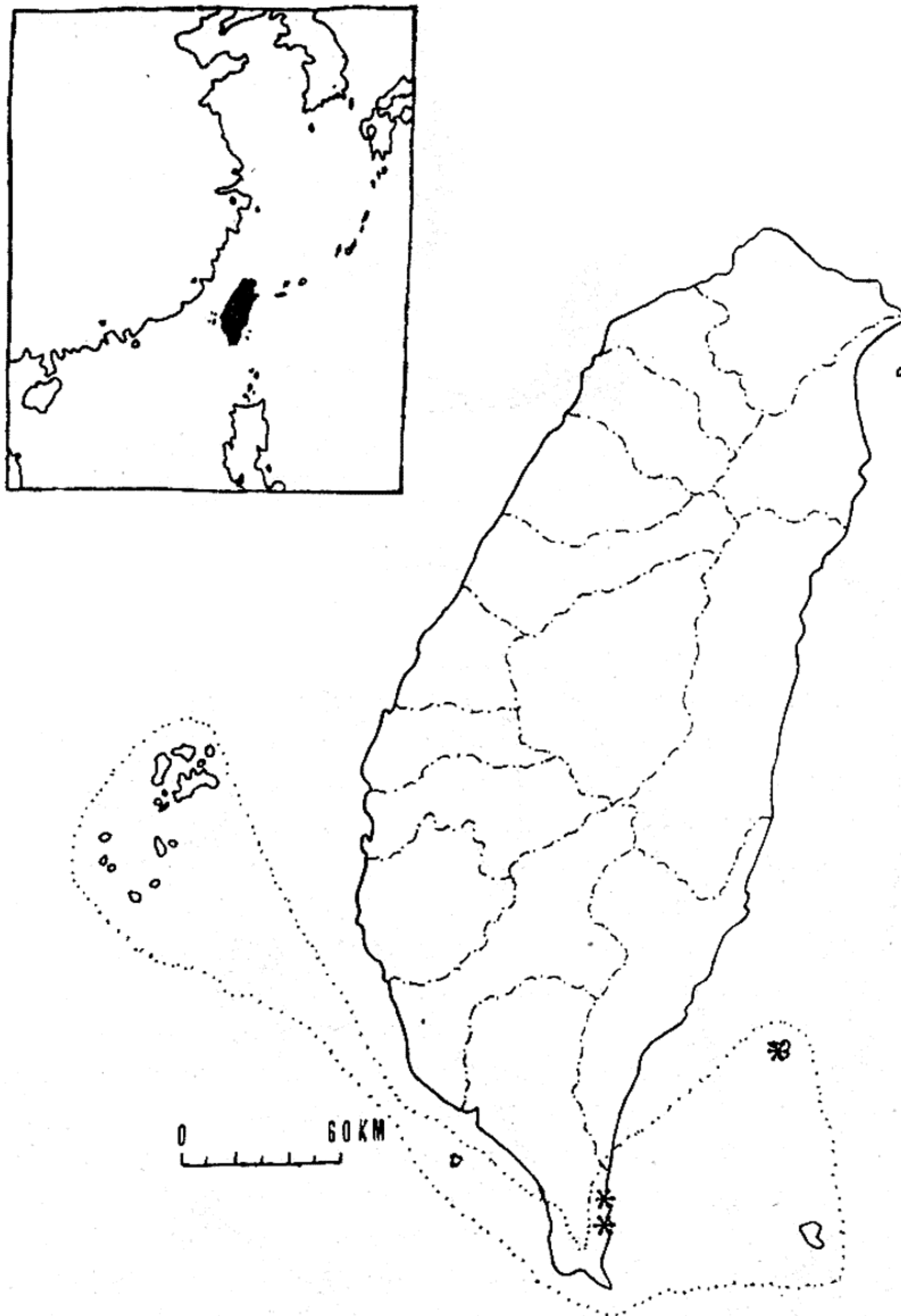


Fig. 2. *Hedyotis taiwanense* S. F. Huang & J. Murata. A: Habit; B: Flower; C: Flower without corolla and stamens; D: Calyx; E: Corolla and stamens; F: Stamen; G: Style; H: Capsule within calyx; I: Seed.

(Fig. 1). flowers placed solitary in axil of a leaf pair and ellipsoidal capsules. Presently, It is only found in the seaside of southern part of Taiwan (Map 1).



Map 1. Distribution map of *Hedyotis taiwanense* S.F. Huang & J. Murata.
 Postulated distribution area

ACKNOWLEDGEMENT

We are grateful to Prof. Tseng-Chieng Huang for assisting this work by his grant (NSC 75-0201-B002-14). We also give thanks to Miss Shioh-Yuh Yang for line-drawing.

LITERATURE CITED

YAMAZAKI, T. 1983. - On *Hedyotis strigulosa* Bartl., *H. coreana* Levl. and *H. biflora* (L.) Lamk.. Journ. Jap. Bot. 58(9): 281-286.

單花耳草(茜草科)，臺灣一新種植物

黃星凡 邑田仁

摘 要

本篇除描述單花耳草之性狀特徵，並作分布圖。