



Supplement

The following supplementary materials are available for this article: Wiya, C., K. Aongyong, A. Damthongdee, A. Baka, T. Chaowasku. 2021. The genus *Phaeanthus* (Annonaceae, Miliuseae) in Thailand: *P. piyae* sp. nov. and resurrection of *P. lucidus*, with molecular phylogenetic analyses. *Taiwania* 66(4): 509-516. Doi: 10.6165/tai.2021.66.509

Appendix S1. Voucher specimens for molecular phylogenetic analyses. GenBank accessions OK664960–OK664971 = sequences newly generated for this study; --- = sequence not available. Taxon: collection location, voucher specimen (herbarium acronym); GenBank accessions: *matK*, *ndhF*, *psbA-trnH*, *rbcL*, *trnLF*, *ycf1*.

Alphonsea elliptica: Bogor Bot. Gard. [Indonesia], *van Balgooy 5141* (L); AY518807, JQ690401, JQ690402, AY318966, AY319078, JQ690403. **Alphonsea** sp.: Bogor Bot. Gard. Indonesia, *Chaowasku 186* (CMUB); MT040200, MT040210, MT040222, MT040233, MT040245, MT040256. **Bocageopsis canescens:** Brazil, *Maas et al. 9243* (U); JQ690409, JQ690410, JQ690411, JQ690407, JQ690408, JQ690412. **Brieya fasciculata:** Ghana, *Jongkind et al. 1862* (WAG); MH585796, MH585822, AY841497, AY841647, AY841725, ---. **Dendrokingstonia gardneri:** Peninsular Malaysia, *Gardner & Sidisunthorn MY 067* (L); MH585797, MH585823, MH585803, MH585807, MH585812, MH585816. **Dendrokingstonia nervosa:** Peninsular Malaysia, *Rogstad 961* (L); MH585798, KJ418386, KJ418400, KJ418382, KJ418407, MH585817. **Desmopsis microcarpa:** Costa Rica, *Chatrou et al. 85* (U); AY518804, JX544771, MT040211, MT040223, AY319059, AY319173, JX544758. **Fenerivia chapelieri:** Madagascar, *Rabevohitra et al. 4439* (MO); KJ418393, KJ418387, KJ418397, MH585808, KJ418403 & KJ418404, MG264598. **Huberantha cerasoides:** Thailand, *Chalermglin 440214-4* (L); AY518854, JQ889985, JQ889980, AY319017, AY319131, JQ889975. **Huberantha stuhlmannii:** Kenya, *Luke & Robertson 1424* (K); AY518853, JX544882, JX544862, AY319035, AY319149, JX544852. **Leoheo domatiophorus:** Vietnam, *Chaowasku 165* (CMUB); MH585799, MH585824, MH585804, MH585809, MH585813, MH585818. **Maasia glauca:** Thailand, *Chaowasku 169* (CMUB); MG264584, MG264589, MG264571, MG264581, MG264576, MG264594. **Marsypopetalum littorale:** Bogor Bot. Gard. [Indonesia], *Rastini 153* (L); AY518835, JX544827, JX544804, AY319026, AY319140, JX544813. **Marsypopetalum modestum:** Thailand, *Keßler PK 3192* (L); AY518834, KC857561, KC857562, AY318980, AY319092, KC857563. **Meiogyne gardneri:** Thailand, *Gardner et al. ST 2014* (L); KC857566, KC857567, KC857568, KC857564, KC857565, KC857569. **Meiogyne virgata:** Borneo, *Keßler PK 2751* (L); AY518798, JX544769, JX544784, AY318982, AY319094, JX544756. **Miliusa mollis:** Thailand, *Keßler PK 3207* (L); AY518851, JQ690503, JQ690504, AY318990, AY319102, JQ690505. **Miliusa velutina:** Thailand, *Pholsena & Koonkhunthod 2842* (L); AY518847, JQ690536, JQ690537, AY318993, AY319105, JQ690538. **Mitrephora alba:** Thailand, *Chalermglin 440304-1* (TISTR, Bangkok); AY518855, JQ889983, JQ889978, AY318994, AY319106, JQ889973. **Mitrephora chulabhorniana:** Thailand, *Aongyong 11* (CMUB); MT040201, MT040211, MT040223, MT040234, MT040246, MT040257. **Monocarpia euneura:** Borneo, *Slik 2931* (L); AY518865, AY841412, AY841477, AY318998, AY319111, ---. **Monocarpia maingayi:** Thailand, *Gardner & Sidisunthorn ST 0541* (L); MH585801, MH585826, MH585806, MH585811, MH585815, MH585819. **Monoon fuscum:** Thailand, *Keßler PK 3222* (L), AY518787, JX544779, JX544792, AY318973, AY319085, JX544767. **Monoon viride:** Thailand, *Chalermglin 440214-3* (L); AY518784, JX544780, JX544793, AY319040, AY319154, JX544768. **Mwasumbia alba:** Tanzania, *Couvreur 85* (WAG); MH585795, MH585821, MH585802, EU747680, EU747674, ---. **Neo-uvaria parallelivenia:** Bogor Bot. Gard. [Indonesia], *Keßler sub IV-H-73* (L); AY518794, KC857570, KC857571, AY319000, AY319113, KC857572. **Neo-uvaria telopea:** Thailand, *Chaowasku 77* (L); JX544751, JX544778, JX544791, JX544755, JX544783, JX544766. **Orophea enterocarpa:** Thailand, *Chalermglin 440403* (TISTR, Bangkok); AY518815, JQ690416, JQ690417, AY319006, AY319119, JQ690418. **Orophea kerrii:** Thailand, *Chalermglin 440416-1* (L); AY518818, JQ690419, JQ690420, AY319008, AY319121, JQ690421. **Oxandra espitana:** Peru, *Chatrou et al. 133* (U); DQ018260, MH585827, AY841487, AY319066, AY319180, MH585820. **Oxandra venezuelana:** Costa Rica, *Chatrou et al. 120* (U); JQ690413, JQ690414, AY841495, AY841645, MT040247, JQ690415. **Phaeanthus lucidus** [= *Phaeanthus* cf. *splendens*]: Thailand, *Aongyong & Baka 27* (CMUB); OK664963, OK664961, OK664965, OK664967, OK664969, OK664971. **Phaeanthus piyae** [= *Phaeanthus* cf. *intermedius*]: Thailand, *Aongyong & Samae 26* (CMUB); OK664962, OK664960, OK664964, OK664966, OK664968, OK664970. **Phaeanthus splendens:** Borneo, *Keßler et al. B 1564* (L); AY518864, JX544777, JX544790, JX544754, AY319126, JX544765. **Phaeanthus ophthalmicus-1:** Papua New Guinea, *Utteridge 17* (K); AY518863, ---, ---, AY319012, AY319125, ---. **Phaeanthus ophthalmicus-2:** Papua New Guinea, *Weiblen WP2A0446* (no herbarium indicated); GQ248183, ---, GQ248373, GQ248677, ---, ---. **Phoenicanthus obliquus:** Sri Lanka, *Huber 518* (L); MG264587, MG264592, MG264574, MG264582, MG264579, MG264597. **Platymitra macrocarpa:** Bogor Bot. Gard. [Indonesia], *Okada 3457* (L); AY518812, JQ690422, JQ690423, AY319013, AY319127, JQ690424. **Polyalthia suberosa:** Utrecht Univ. Bot. Gard., *Chatrou 480* (U); AY238965, AY841417, AY841502, AY238956, AY231289 and AY238949, JX544817. **Polyalthiopsis floribunda:** Vietnam, *Chaowasku 128* (CMUB); MG264583, MT040212, MT040224, MG264580, MG264575, MG264593. **Popowia hirta:** Borneo, *Keßler B 1628* (L); AY518860, JX544830, JX544806, AY319042, AY319156, JX544816. **Popowia pisocarpa:** Bogor Bot. Gard. [Indonesia], *van Balgooy & van Setten 5683* (L); AY518862, KC857578, KC857579, AY319044, AY319158, KC857580. **Pseuduvaria fragrans:** Thailand, *Chaowasku 27* (L); EU522286, JX544829, EU522176, EU522341, EU522231, JX544815. **Pseuduvaria setosa:** Thailand, *Chaowasku 66* (L); KC857582, KC857583, KC857584, MT040235, KC857581, KC857585. **Sageraea elliptica:** Thailand, *Chaowasku 45* (L); KC857587, KC857588, KC857589, MT040236, KC857586, KC857590. **Sageraea lanceolata:** Borneo, *Ridsdale DV-M2-1692* (L); AY518799, JX544774, JX544787, AY319050, AY319164, JX544762. **Sapranthus viridiflorus:** Costa Rica, *Chatrou et al. 55* (U); AY743493, AY841422, AY841515, AY319051, AY319165, JX544760. **Stelechocarpus burahol:** Bogor Bot. Gard. [Indonesia], *Mols 13* (L); AY518803, JX544775, JX544788, AY319053, AY319167, JX544763. **Stenanona costaricensis:** Costa Rica, *Chatrou et al. 67* (U); AY518801, JX544772, AY841516, AY319069, AY319183, JX544759. **Tridimeris** sp.: Missouri Bot. Gard., *Maas 8646* (U); JX544750, JX544773, JX544786, JX544753, JX544782, JX544761. **Trivalvaria** cf. *dubia:* Thailand, *Chaowasku 35* (L); JX544824, JX544828, JX544805, JX544822, JX544794, JX544814. **Trivalvaria stenopetala:** Thailand, *Chaowasku 73* (CMUB); MT040203, MT040214, MT040226, MT040238, MT040249, MT040259. **Wangia saccopetaloides:** China, *Li 752* (QBG); MT040204, MT040215, MT040227, MT040239, MT040250, MT040260. **Winitia cauliflora:** Bogor Bot. Gard. [Indonesia], *Unknown s.n. sub XV-A-196* (L); AY518800, JX544776, JX544789, AY319054, AY319068, JX544764. **Winitia thailandana:** Thailand, *Aongyong 9* (CMUB); MT040208, MT040219, MT040231, MT040243, MT040254, MT040264. **Wuodendron praecox:** Thailand, *Chaowasku 108* (L); JX544749, MT040221, JX544785, JX544752, JX544781, JX544757.

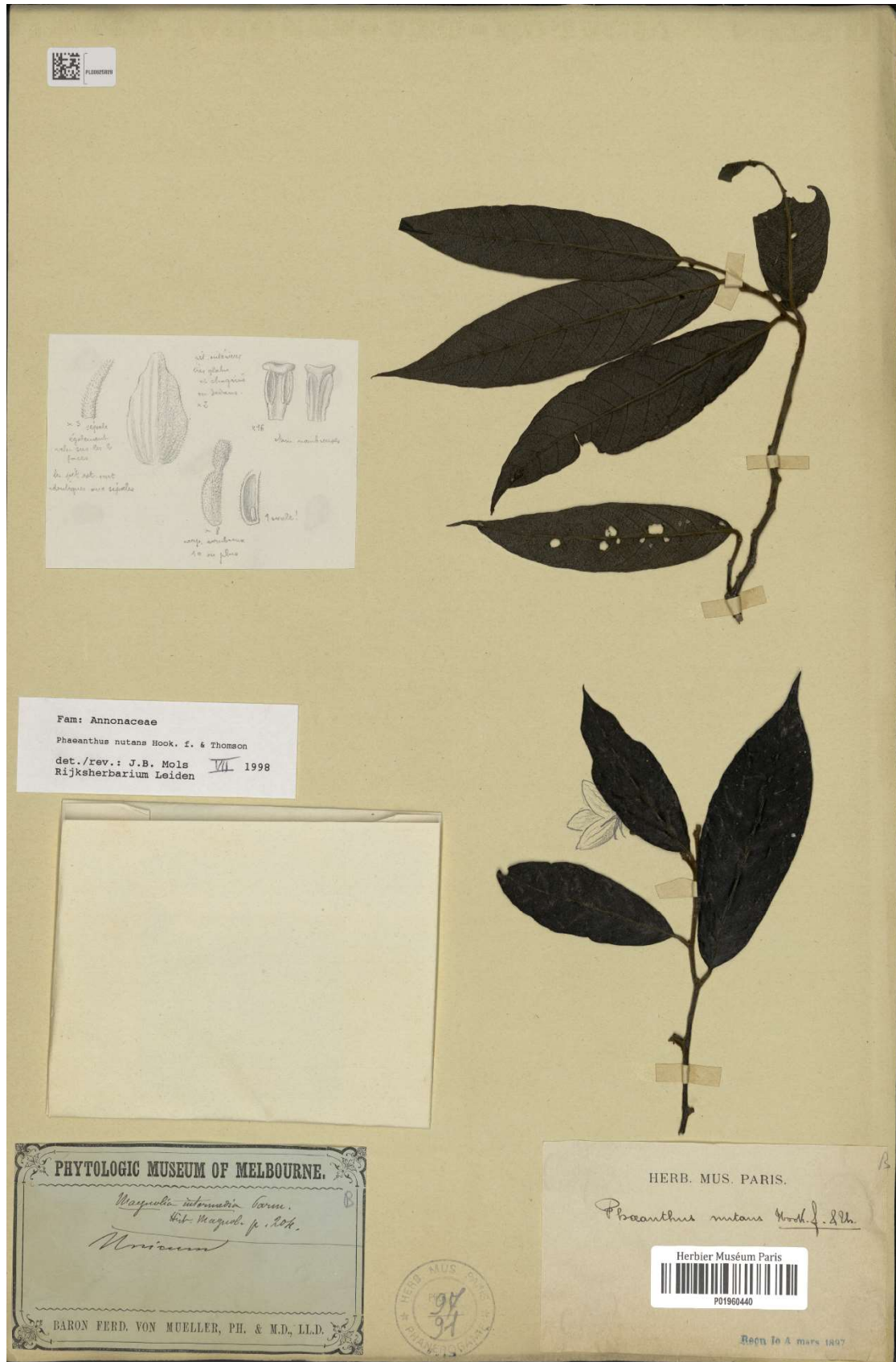


Fig. S1. Holotype of *Magnolia intermedia* at P [P01960440; *Anon. s.n.*; = *Phaeanthus intermedius*].