



Supplement

The following supplementary materials are available for this article: Li, W., M. Cheng, Y. Zhao. 2022. Identification and characterization of potassium (K^+) transporters in potato (*Solanum tuberosum* L.). *Taiwania* 67(3): 422-434. doi: 10.6165/tai.2022.67.422

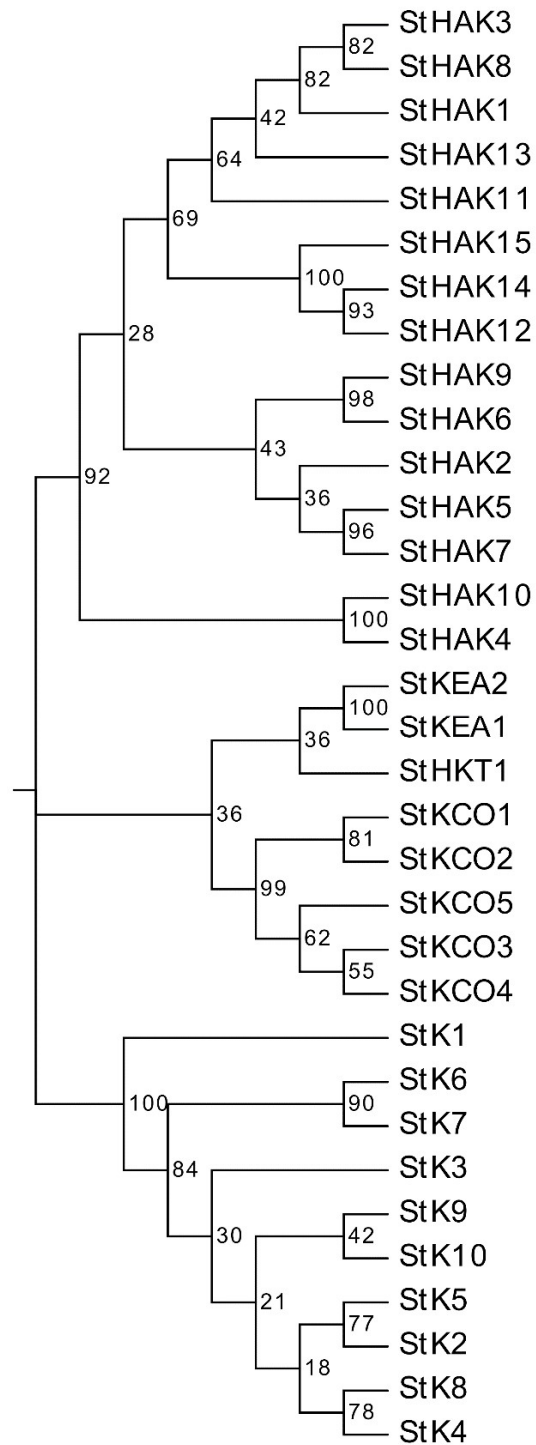


Fig. S1. Neighbor-joining tree for the K^+ transporter family in potato. Bootstrap values were calculated in 1500 replications by using MEGA 7.



Fig. S2. Growth performances in potato leaves and roots under Pi-deprived and Pi-available condition in a pot experiment. Growth performance of potato at 0 mM and 1.0 mM Pi treatment.

Table S1. Specific primers used for qRT-PCR analysis

Genes		Primers sequences (5'-3')
StHAK6	F	ACCCCGTCAACTCATCTATCAGG
	R	CTTGCTTCCATCAGTTCCTCA
StHAK9	F	CGAGCCAGAAGTTGAAACGACA
	R	CCACTCCTATGCTCTGGAATGC
StHAK11	F	TCTATTGGCAGAAGCAGAGGTGA
	R	CCATAACTTTCTCCCCTTGCCCTG
StKCO5	F	CCATTGATGCCTTTTATTGTGTCTG
	R	AACAAAGGGTGCTGGTCAAATC
StK1	F	TTTAGGAATGCTCAGATTTTGGCG
	R	CTGGCACATCTGACCCAAAAGT
StK4	F	GGGGGATGTTTGTGGAGAAGTT
	R	ATCATCGGGTCCCTTCGCTC
StK9	F	GCAGACCAATGAGCACGACG
	R	TTCCCCGTTGTCTCCTTTC
StKEA1	F	TCGGTTGTTTATTCTGGGAGGA
	R	CATCATTAGTTACGGGAGCGGA
StKEA2	F	GAGACAGTGGCTCAGTTCGGTG
	R	GCTTACCGCCACACAACGAG
StHKT1	F	ATGGGACAGTTGGAATGTCAATAGG
	R	AATACTTTCCAAGCCTTCCACCT