



## Supplement

The following supplementary materials are available for this article: Yang, B., Ya, J.-D., Zhang, W., Song, Y., Wang, W., Zhu, Z.-M., He, J.-H., Zuo, Y.-J., Tan, Y.-H. 2023 Two new species of *Primula* (Primulaceae) from Yunnan, China. *Taiwania* 68(2): 230-240. doi: 10.6165/tai.2023.68.230

**Table S1.** Voucher information and Genbank accession numbers. (/, missing data; \*, newly generated sequences).

Species	Voucher Location	ITS	Plastome
<i>Androsace laxa</i>	/	/	MG181220
<i>A. sublanata</i>	/	KM198394	/
<i>Omphalogramma vinciflorum</i>	/	KM198446	/
<i>Primula algida</i>	/	KM198354	MT317258
<i>P. alpicola</i>	/	KM198362, KM198384, KM198424	KY861055, MT317264
<i>P. ambita</i>	/	/	MK344742, MK344743
<i>P. amethystina</i>	/	KM198439	MT317253
<i>P. amethystina</i> ssp. <i>argutidens</i>	/	/	ON416902
<i>P. amethystina</i> ssp. <i>brevifolia</i>	/	KM198399	/
<i>P. anisodora</i>	/	/	MT317278
<i>P. aromatica</i>	/	KM198388, KM198389, KM198390, KM198391, KM198419, KM198420	/
<i>P. asarifolia</i>	/	/	MK344725, MK344726
<i>P. barbicalyx</i>	/	KM198405	MK344732, MK344763
<i>P. beesiana</i>	/	/	MN504639
<i>P. bella</i>	/	KM198358, KM198440, KM198442	/
<i>P. bellidifolia</i>	/	KM198380, KM198398	/
<i>P. blattariformis</i>	/	KM198411, KM198418	/
<i>P. blinii</i>	/	KM198365, KM198445	/
<i>P. boreiocalliantha</i>	/	KM198379	/
<i>P. bracteata</i>	/	KM198421	MT317268
<i>P. bulleyana</i>	/	/	MN428416
<i>P. caldaria</i>	/	KM198350	/
<i>P. calliantha</i>	/	KM198441	MZ054238
<i>P. calliantha</i> ssp. <i>bryophila</i>	/	/	ON416873
<i>P. calyprata</i>	/	KM198404	MT317302
<b><i>P. calyprata</i></b>	<b>YB186(Wu,L.4377[BNU]); Malipo Co., Yunnan, China</b>	<b>OQ883677*</b>	<b>OQ928042*</b>
<i>P. capitata</i>	/	KM198429	MT317265
<b><i>P. cavaleriei</i></b>	<b>YB191(Wu,L.4541[BNU]), Xuyong Co., Sichuan, China</b>	<b>OQ883681*</b>	<b>OQ928045*</b>
<b><i>P. cavaleriei</i></b>	<b>YB192(Wu,L.4543[BNU]), Xuyong Co., Sichuan, China</b>	<b>OQ883682*</b>	<b>OQ928046*</b>
<i>P. caveana</i>	/	KM198397	/
<i>P. cawdoriana</i>	/	/	MT317262
<i>P. celsiiformis</i>	/	KM198363	/
<i>P. chapaensis</i>	/	KM198403, KM198408, KM198409	/
<b><i>P. chapaensis</i></b>	<b>YB176 (Ya,J.-D.21HT4844[KUN]), Yunnan, China</b>	<b>OQ883668*</b>	<b>OQ928033*</b>
<b><i>P. chapaensis</i></b>	<b>YB179(Wu,L.4426[BNU]), Maguan Co., Yunnan, China</b>	<b>OQ883671*</b>	<b>OQ928036*</b>
<i>P. chionantha</i>	/	KM198438	MT317259
<i>P. chionantha</i> ssp. <i>sinopurpurea</i>	/	/	MH394357
<i>P. chrysochlora</i>	/	/	KX668178
<i>P. chungensis</i>	/	/	MT317281
<i>P. cicutariifolia</i>	/	AF323703	MT317299
<i>P. cicutariifolia</i>	/	/	MW924287
<i>P. deflexa</i>	/	KM198376, KM198423	/
<i>P. densa</i>	/	/	MK344759, MK344760
<i>P. denticulata</i> ssp. <i>sinodenticulata</i>	/	/	KX668180
<i>P. dryadifolia</i>	/	/	MT317272
<i>P. dryadifolia</i> ssp. <i>dryadifolia</i>	/	KM198355	/
<i>P. dryadifolia</i> ssp. <i>jonardunii</i>	/	KM198381, KM198382, KM198383	/
<i>P. duclouxii</i>	/	KM198444	MK344764



<i>P. dumicola</i>	/	/	MK344727, OK643985
<i>P. effusa</i>	/	/	MK344737, MK344738
<i>P. erythrocarpa</i>	/	/	MT317274
<i>P. faberi</i>	/	KM198433	MT317252
<i>P. farinosa</i> var. <i>hannasanensis</i>	/	/	MZ779112
<i>P. farinosa</i> var. <i>koreana</i>	/	/	MZ779113
<i>P. filchnerae</i>	/	AF323702	MK888698, MT181607, MT268975
<i>P. flaccida</i>	/	/	MT317271
<i>P. florindae</i>	/	/	KY861053, MT317255
<i>P. forbesii</i>	/	/	OL457147
<i>P. forrestii</i>	/	KM198349	MT317279
<i>P. fragrans</i>	/	EU887001	/
<i>P. gemmifera</i>	/	/	MT317266
<i>P. geraniifolia</i>	/	KM198395	MT317276
<i>P. glutinosa</i>	/	AF260755	/
<i>P. handeliana</i>	/	/	MG181221
<i>P. helodoxa</i>	/	KM198393	MN504640
<i>P. heucherifolia</i>	/	KM198443	MT317256
<i>P. homogama</i>	/	/	MW167117
<i>P. hookeri</i>	/	/	MT317269
<i>P. hubeiensis</i>	/	/	MT268976
<i>P. interjacens</i> var. <i>epilosa</i>	/	KM198367	/
<i>P. interjacens</i> var. <i>interjacens</i>	/	KM198368	/
<i>P. jiugongshanensis</i>	/	/	MT937162
<i>P. knuthiana</i>	/	/	MG181223
<i>P. kwangtungensis</i>	/	KM198447, KM198448	KX774737
<i>P. kweichouensis</i>	/	KM198449, KM198450	/
<b><i>P. kweichouensis</i> var. <i>venulosa</i></b>	YB187(Bai, X.-X. s.n.[HITBC]), Suiyang Co., Guizhou, China	OQ883678	OQ928043
<i>P. latisecta</i>	/	KM198366	/
<i>P. malacoides</i>	/	KM198371, KM198386, KM198392	/
<i>P. malvacea</i>	/	KM198413, KM198417, KM198426	/
<i>P. matthioli</i> ssp. <i>pekinensis</i>	/	/	KY235373
<i>P. matthioli</i> ssp. <i>matthioli</i>	/	AY566867	/
<i>P. merrilliana</i>	/	AF323704	MT317298
<i>P. miyabeana</i>	/	KM198385	MT317303
<i>P. mollis</i>	/	KM198428	/
<i>P. moupinensis</i>	/	KM198416, KM198422	KX668175
<i>P. obconica</i>	/	JX258292, KM198357	/
<b><i>P. obconica</i></b>	YB188(Wu, L. 4289[BNU]), Hunan, China	OQ883679	OQ928047, OQ928048
<i>P. obconica</i> ssp. <i>begoniiformis</i>	/	/	MK344757, MK344758
<i>P. obconica</i> ssp. <i>fujianensis</i>	/	/	MK344734, MK344735
<i>P. obconica</i> ssp. <i>obconica</i>	/	/	MK344753, OK040683, OK040690, OK040691
<i>P. obconica</i> ssp. <i>parva</i>	/	/	MK344728, MK344729
<i>P. obconica</i> ssp. <i>werringtonensis</i>	/	KM198387	MK344740, MK344741
<b><i>P. obconica</i> ssp. <i>werringtonensis</i></b>	YB178(Tan, Y.-H. 2467[HITBC]), Yunnan, China	OQ883670	OQ928035
<i>P. odontocalyx</i>	/	/	ON416872
<i>P. oreodoxa</i>	/	KM198414	MK344752, OK643997
<i>P. ovalifolia</i>	/	KM198410	MW924293
<i>P. palinuri</i>	/	/	OM313289
<i>P. palmata</i>	/	KM198427	/
<i>P. parryi</i>	/	EU886999	/
<i>P. partschiana</i>	/	KM198351, KM198352, KM198431	/
<b><i>P. partschiana</i></b>	YB181(GYS412[HITBC]), Yuanyang Co., Yunnan, China	OQ883673	OQ928038
<b><i>P. partschiana</i></b>	YB182(GYS424[HITBC]), Yuanyang Co., Yunnan, China	OQ883674	OQ928039
<i>P. pellucida</i>	/	/	KX668181
<i>P. persimilis</i>	/	/	KX641757
<b><i>P. persimilis</i></b>	YB190(Wu, L. 4539[BNU]), Xuyong Co., Sichuan, China	OQ883680	OQ928044
<i>P. pinnatifida</i>	/	KM198360	/
<i>P. poissonii</i>	/	KM198364	KF753634



<i>P. polyneura</i>	/	KM198432, KM198435, KM198437	/
<i>P. prenantha</i> ssp. <i>morsheadiana</i>	/	/	MT317293
<i>P. prenantha</i> ssp. <i>prenantha</i>	/	/	MT317296
<i>P. pseudodenticulata</i>	/	KM198348	/
<i>P. pulchella</i>	/	/	KX668179
<i>P. purdomii</i>	/	/	MT317267
<i>P. pycnoloba</i>	/	KM198415	/
<i>P. qiupuensis</i>	/	/	MW924290
<i>P. ranunculoides</i>	/	/	MT268978
<i>P. rubifolia</i>	/	KM198372	MK344748, MK344749
<i>P. rugosa</i>	/	KM198353, KM198400, KM198401, KM198402	/
<i>P. rupestris</i>	/	AF323697, KM198356	/
<i>P. saturata</i>	/	KM198412	/
<i>P. saxatilis</i>	/	/	MT317260
<b><i>P. sect. obconica</i></b>	YB184(GYS450[HITBC]), Yuanyang Co., Yunnan, China	OQ883676*	OQ928041*
<i>P. secundiflora</i>	/	KM198373, KM198374, KM198375	MT317261
<i>P. septemloba</i>	/	KM198434	MT317280
<i>P. serratifolia</i>	/	KM198378	/
<i>P. sertulum</i>	/	KM198361	/
<i>P. sikkimensis</i>	/	KM198425	MZ231127
<i>P. sinensis</i>	/	JF978054, KM198430	KU321892
<i>P. sinolisteri</i> var. <i>aspera</i>	/	/	MK344744, MK344745
<i>P. sinolisteri</i> var. <i>sinolisteri</i>	/	/	MK344746, MK344747
<b><i>P. sinuata</i></b>	YB183(GYS432[HITBC]), Yuanyang Co., Yunnan, China	OQ883675*	OQ928040*
<i>P. smithiana</i>	/	KM198396	OM313291
<i>P. sonchifolia</i>	/	/	MT317270
<i>P. stenocalyx</i>	/	/	MW678839
<i>P. stenodonta</i>	/	/	KX668176
<i>P. strumosa</i>	/	/	MT317275
<b><i>P. sugongii</i> sp. nov.</b>	YB175(Ya, J.-D. BC201231[HITBC, KUN]), Yunlong Co., Yunnan, China	OQ883667*	OQ928032*
<i>P. taliensis</i>	/	/	MT317277
<i>P. tsiangii</i>	/	/	MN065496
<i>P. valentiniana</i>	/	/	OM313290
<i>P. veris</i>	/	KM198347	KX639823
<i>P. veris</i> ssp. <i>veris</i>	/	HM629146	/
<i>P. vilmoriniana</i>	/	/	MK344739, MK344755
<i>P. violaris</i>	/	/	MW970137
<i>P. virginis</i>	/	/	MT317257
<i>P. waltonii</i>	/	/	KY861057
<i>P. wangii</i>	/	KM198406, KM198407	/
<i>P. wannanensis</i>	/	/	MW924292
<i>P. watsonii</i>	/	KM198377	/
<i>P. wilsonii</i>	/	/	MW442886
<i>P. woodwardii</i>	/	/	MG181222
<i>P. yunnanensis</i>	/	KM198359, KM198436	/
<i>P. yunnanensis</i>	/	/	/
<b><i>P. zhengyii</i> sp. nov.</b>	YB180(T0471[HITBC]), Luchun Co., Yunnan, China	OQ883672*	OQ928037*
<b><i>P. zhui</i></b>	YB177(Li, Z.-H.s.n.[HITBC]), Simao City, Yunnan, China	OQ883669*	OQ928034*
<i>Soldanella alpina</i> ssp. <i>alpina</i>	/	AJ306323	/

**Note:** voucher[Sequencing number(Collector, Collect No.[Herbarium code])]



Fig. S1. Holotype of *Primula sugongii* (HITBC0082349).

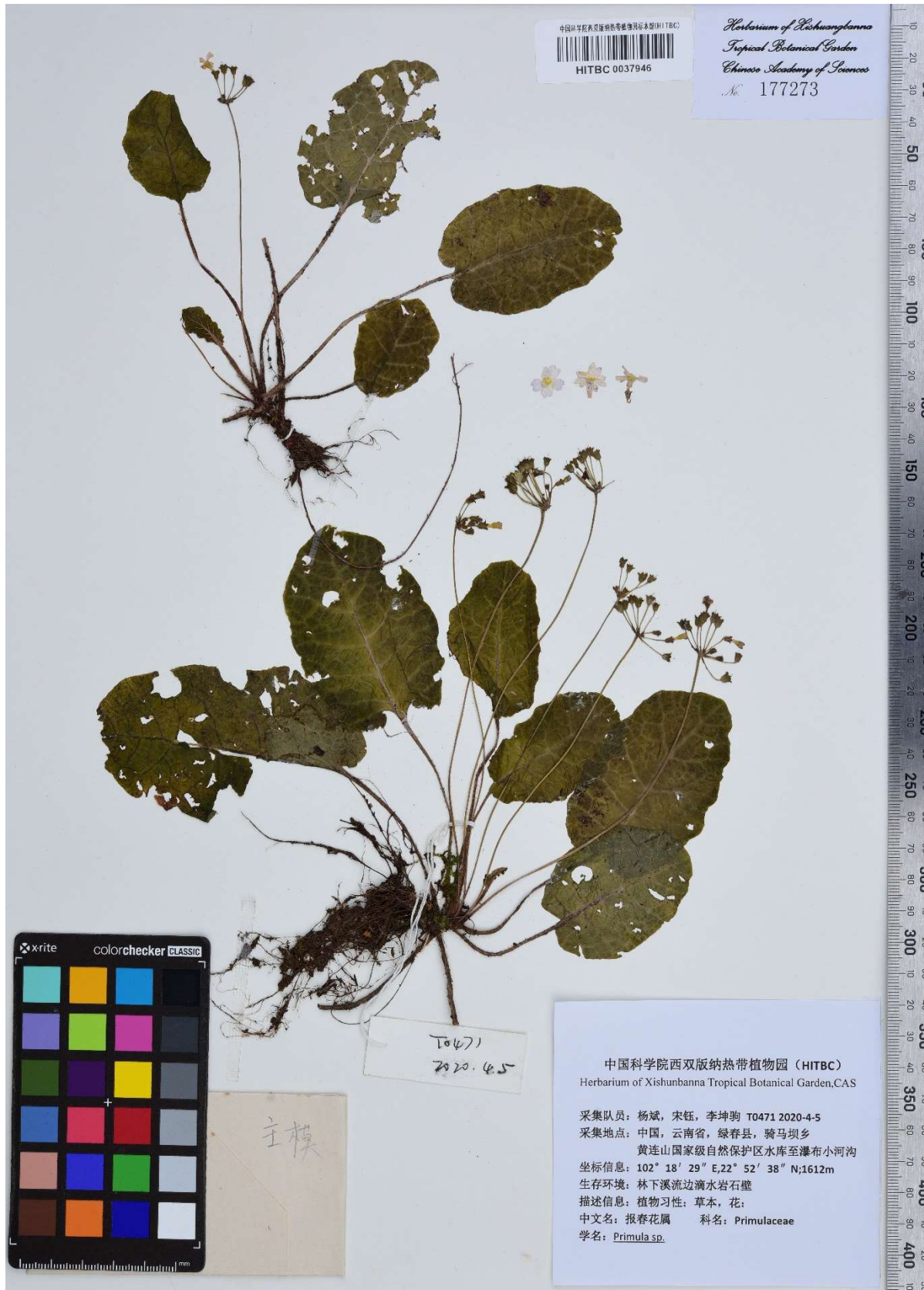


Fig. S2. Holotype of *Primula zhengyij* (HITBC0037946).