



Supplement

The following supplementary materials are available for this article: Hsieh, C.-H., Guo, T.-W., Tu, K.-Y., Liao, C.-T., Chuang, W.-P. 2023 Genetic structure of the rice leaf folder, *Cnaphalocrocis medinalis* (Lepidoptera: Crambidae) in Taiwan. *Taiwania* 68(4): 451-457. doi: [10.6165/tai.2023.68.451](https://doi.org/10.6165/tai.2023.68.451)

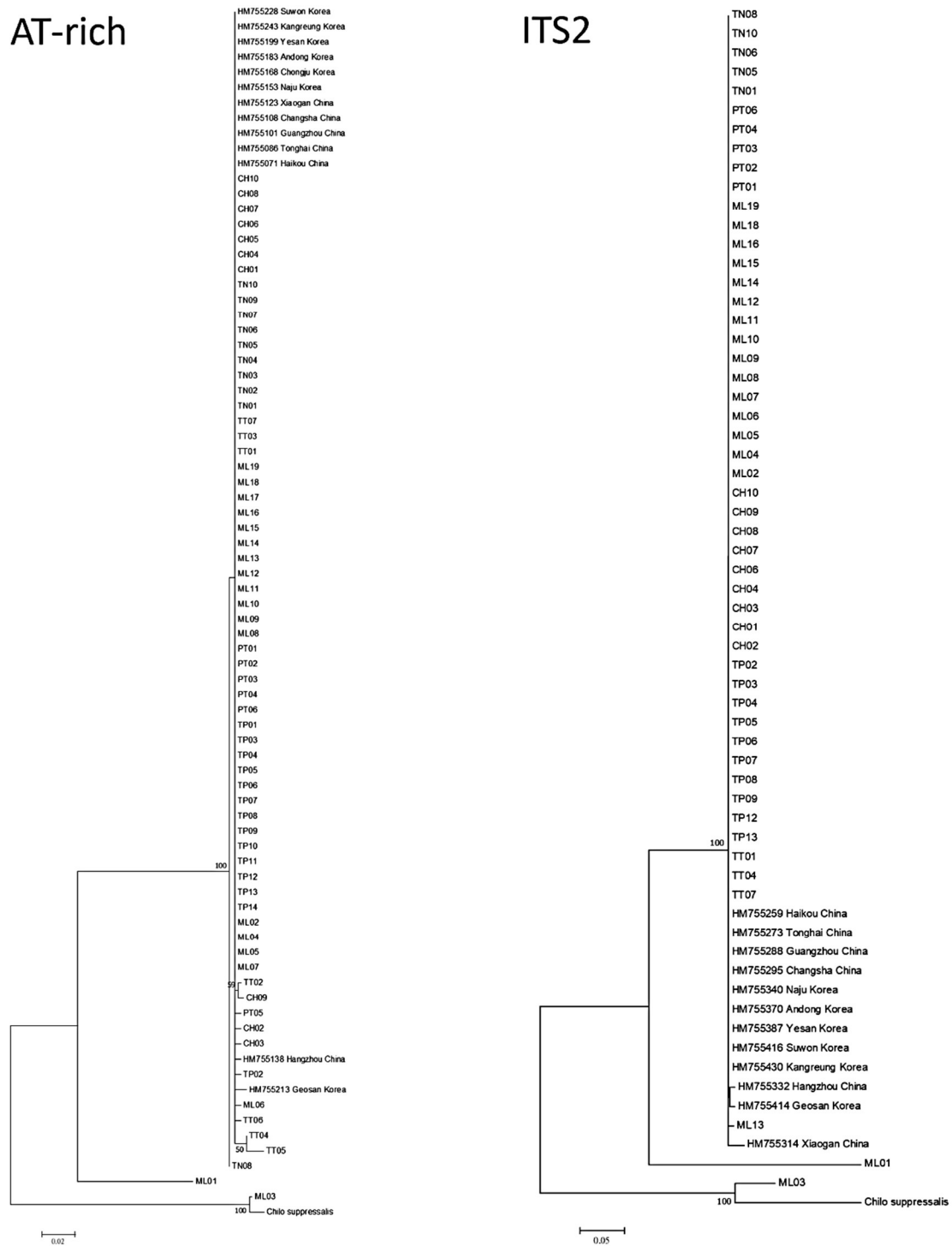


Fig S1. Maximum-likelihood phylogeny of *Cnaphalocrocis medinalis* based on mitochondrial AT-rich and ITS2 sequences in Taiwan, China, and Korea. Sequence of the *Chilo suppressalis* was used as outgroup.