



Supplement

The following supplementary materials are available for this article: Li, R.-F., Pan, B. 2023. *Primulina alba*, a new cave-dwelling species of Gesneriaceae from a Limestone Area in Tiandeng County, Guangxi, China. *Taiwania* 68(1): 79-84. doi: [10.6165/tai.2023.68.79](https://doi.org/10.6165/tai.2023.68.79)

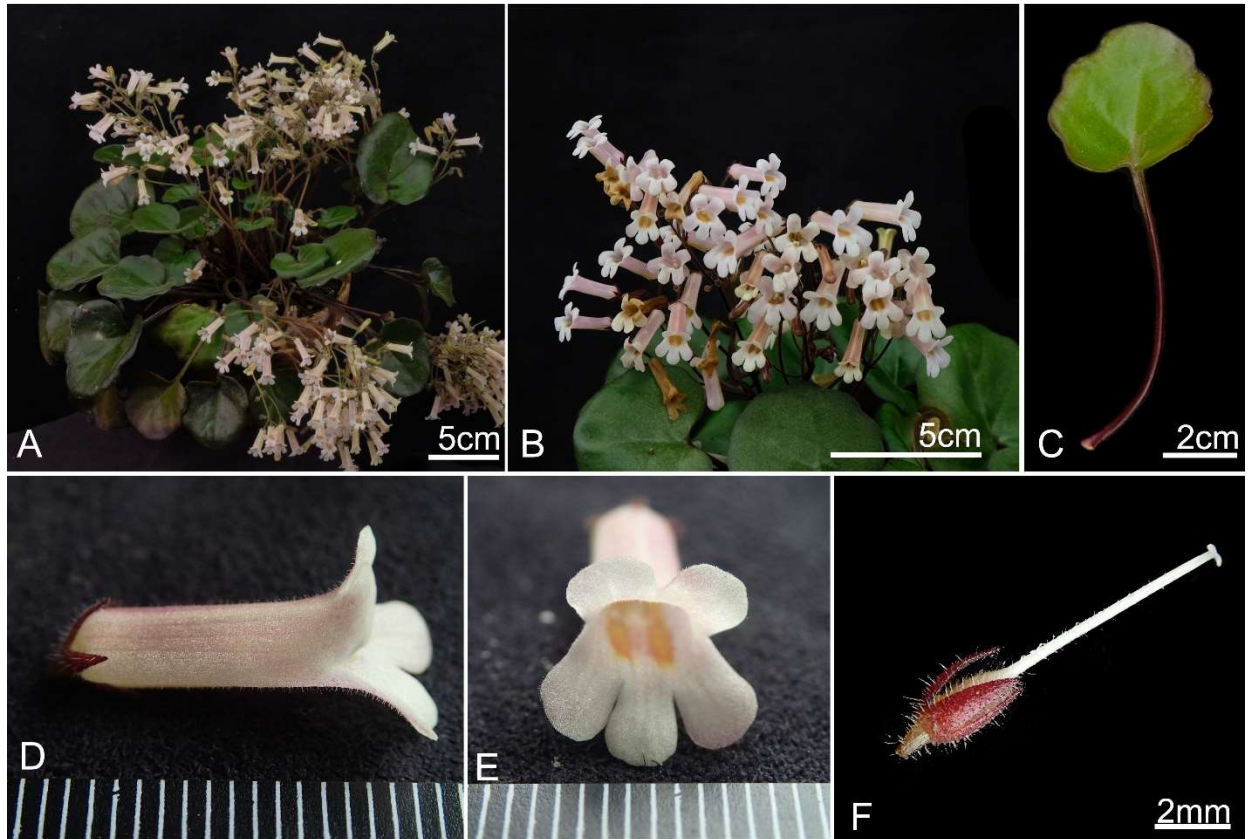


Fig. S1. *Primulina cerina* (A–F) A: Habit. B: Flowers. C: Leaf blades. D: Lateral view of the corolla. E: Front view of the corolla. F: Pistil and calyx.

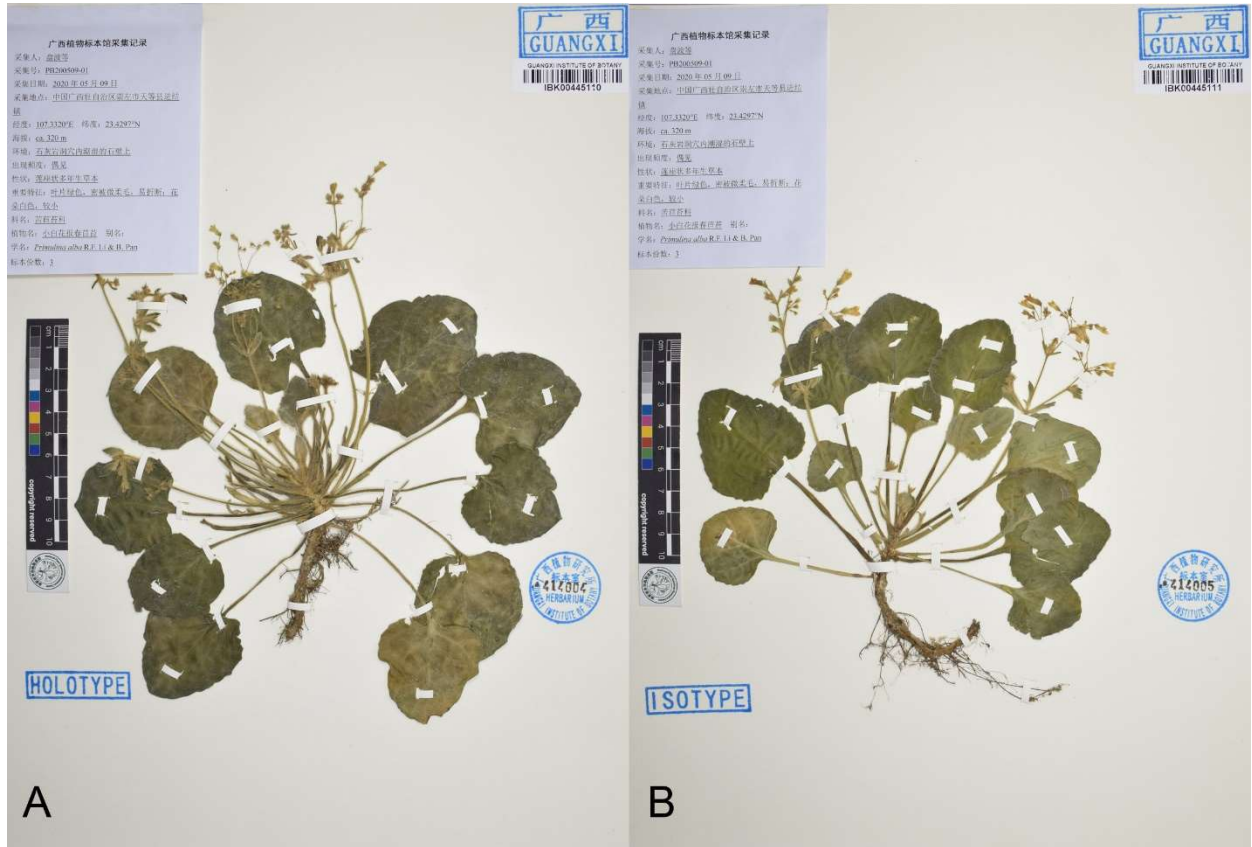


Fig. S2. The type specimen of *Primulina alba* in Guangxi Institute of Botany, Guangxi Zhuang Autonomous Region. Guilin.