



Supplement

The following supplementary materials are available for this article: Chung, K.-F., Kono, Y., Hsieh, C.-L., Tsai, L.-W., Chen, H.-W., Yang, H.-A., Vasques, D.T., Kokubugata, G., Peng, C.-I., Oginuma, K. 2024 An updated synopsis of *Lysimachia* L. (Lysimachieae, Primulaceae) of Taiwan. *Taiwania* 69(2): 207-228. doi: 10.6165/tai.2024.69.207

Table S1: HTTP URIs of online type specimen images examined. Species recognized in present study are in **bold**.

-
- Lysimachia arvensis*** (L.) U.Manns & Anderb. ≡ *Anagallis arvensis* L.—Lectotype (LINN 208.1): <https://linnean-online.org/2263/#?s=0&cv=0>
- Lysimachia candida*** Lindl.—Neotype (K000832646): <https://plants.jstor.org/stable/viewer/10.5555/al.ap.specimen.k000832646>
- Lysimachia capillipes*** Hemsl.—Lectotype (K000750651): <https://plants.jstor.org/stable/viewer/10.5555/al.ap.specimen.k000750651>
 Isolectotype (E-00024978): <https://plants.jstor.org/stable/viewer/10.5555/al.ap.specimen.e00024978>
 Isolectotype (GH-00073486): <https://plants.jstor.org/stable/viewer/10.5555/al.ap.specimen.gh00073486>
 Syntype (K000750652): <https://plants.jstor.org/stable/viewer/10.5555/al.ap.specimen.k000750652>
 Syntype (K000750654): <https://plants.jstor.org/stable/viewer/10.5555/al.ap.specimen.k000750654>
 Syntype (K000750653): <https://plants.jstor.org/stable/viewer/10.5555/al.ap.specimen.k000750653>
 Syntype (NY00329486): <https://plants.jstor.org/stable/viewer/10.5555/al.ap.specimen.ny00329486>
- Lysimachia lalashanensis* S.S.Ying—Holotype (NTUF): <https://homepage.ntu.edu.tw/~yingshao/NTUF-111-061%20-%201.htm>
- Lysimachia chingshuiensis*** C.I Peng & C.M.Hu—Holotype (HAST-26150): <https://n2t.net/ark:/18474/b2qv3c72j>
- Lysimachia decurrens*** G.Forst.—Holotype (BM001040033): <https://plants.jstor.org/stable/viewer/10.5555/al.ap.specimen.bm001040033>
Lysimachia multiflora Wall., nom. nud.—Syntypes (K001113211): <https://plants.jstor.org/stable/viewer/10.5555/al.ap.specimen.k001113211>
Lysimachia consobrina Hance—Lectotype (K000750749): <https://plants.jstor.org/stable/viewer/10.5555/al.ap.specimen.k000750749>
 Isolectotype (BM000996958): <https://plants.jstor.org/stable/viewer/10.5555/al.ap.specimen.bm000996958>
- Lysimachia fortunei*** Maxim.—Lectotype (LE): Figure 57 in <https://libknowledge.nmns.edu.tw/nmnswebtpusr/00008/200612.pdf>
 Isolectotype (LE): Figure 58 in <https://libknowledge.nmns.edu.tw/nmnswebtpusr/00008/200612.pdf>
 Isolectotype (K000750755): <https://plants.jstor.org/stable/viewer/10.5555/al.ap.specimen.k000750755>
 Isolectotype (M0165110): <https://plants.jstor.org/stable/viewer/10.5555/al.ap.specimen.m0165110>
 Syntype (LE) Figure 61 in <https://libknowledge.nmns.edu.tw/nmnswebtpusr/00008/200612.pdf>
 Syntype (K000832644): <https://plants.jstor.org/stable/viewer/10.5555/al.ap.specimen.k000832644>
 Syntype (BM001040387): <https://plants.jstor.org/stable/viewer/10.5555/al.ap.specimen.bm001040387>
 Syntype (BM001040388): <https://plants.jstor.org/stable/viewer/10.5555/al.ap.specimen.bm001040388>
- Lysimachia japonica*** Thunb.—Holotype (UPS V-004249): <http://cphunberg.ebc.uu.se/specimens/4249?locale=en>
- Lysimachia loeflingii*** F.J.Jiménez & M.Talavera ≡ *Anagallis latifolia* L.—Lectotype (LINN 208.3): <https://linnean-online.org/2265/#?s=0&cv=0>
- Lysimachia mauritiana*** Lam.—Lectotype (MPU013006): <https://plants.jstor.org/stable/viewer/10.5555/al.ap.specimen.mpu013006>
 Isolectotype (P00299870): <http://coldb.mnhn.fr/catalognumber/mnhn/p/p00299870>
 Isolectotype (P00299873): <http://coldb.mnhn.fr/catalognumber/mnhn/p/p00299873>
 Isolectotype (P00299874): <http://coldb.mnhn.fr/catalognumber/mnhn/p/p00299874>
 Isolectotype (P00299877): <http://coldb.mnhn.fr/catalognumber/mnhn/p/p00299877>
- Lysimachia lineariloba* Hook. & Arn.—Lectotype (E00369157): <https://plants.jstor.org/stable/viewer/10.5555/al.ap.specimen.e00369157>
- Lysimachia minima*** (L.) U.Manns & Anderb. ≡ *Centunculus minimus* L.—Lectotype (LINN 147.1): <https://linnean-online.org/1902/#?s=0&cv=0>
- Lysimachia nigropunctata*** Masam.—Lectotype (TAI-119056): <https://tai2.ntu.edu.tw/species/505%20004%2010%200#>
 Isolectotype (TAI-119049): <https://tai2.ntu.edu.tw/species/505%20004%2010%200#>
- Lysimachia ravenii*** C.I Peng—Isotype (HAST-144747): <https://n2t.net/ark:/18474/b2445jx2t>
- Lysimachia remota*** Petitm.—Holotype (E00024969): <https://plants.jstor.org/stable/viewer/10.5555/al.ap.specimen.e00024969>
- Lysimachia simulans*** Hemsl.—Holotype (K000750731): <https://plants.jstor.org/stable/viewer/10.5555/al.ap.specimen.k000750731>
Lysimachia ardisioides Masam.—Holotype (TAI-119048): <https://tai2.ntu.edu.tw/species/505%20004%2001%200/119048>
- Lysimachia taiwaniana*** Suzuki—Holotype (TAI-119050): <https://tai2.ntu.edu.tw/species/505%20004%2003%200/119050>
Lysimachia nanhutashanensis S.S.Ying—Holotype (NTUF): Fig. 259: <https://homepage.ntu.edu.tw/~yingshao/0New%20Taxa%20Volume%204.pdf>
-



Fig. S1. Holotype of *Lysimachia fragrans* Hayata (TI 00265327). Courtesy of the Herbarium of the University of Tokyo (TI). S2

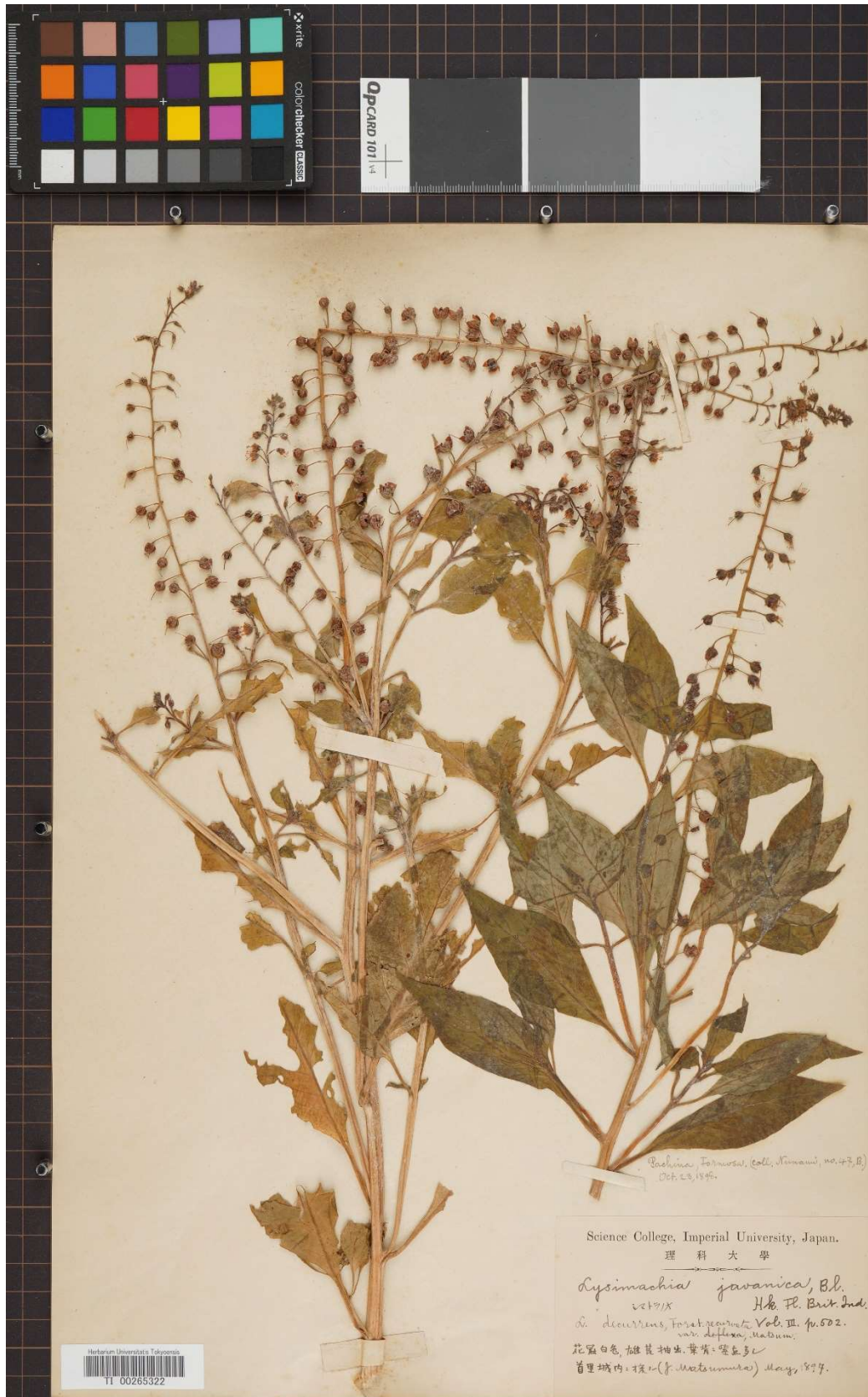


Fig. S2. Lectotype of *Lysimachia decurrens* var. *recurvata* Matsum. (TI 00265322). Courtesy of the Herbarium of the University of Tokyo (TI).

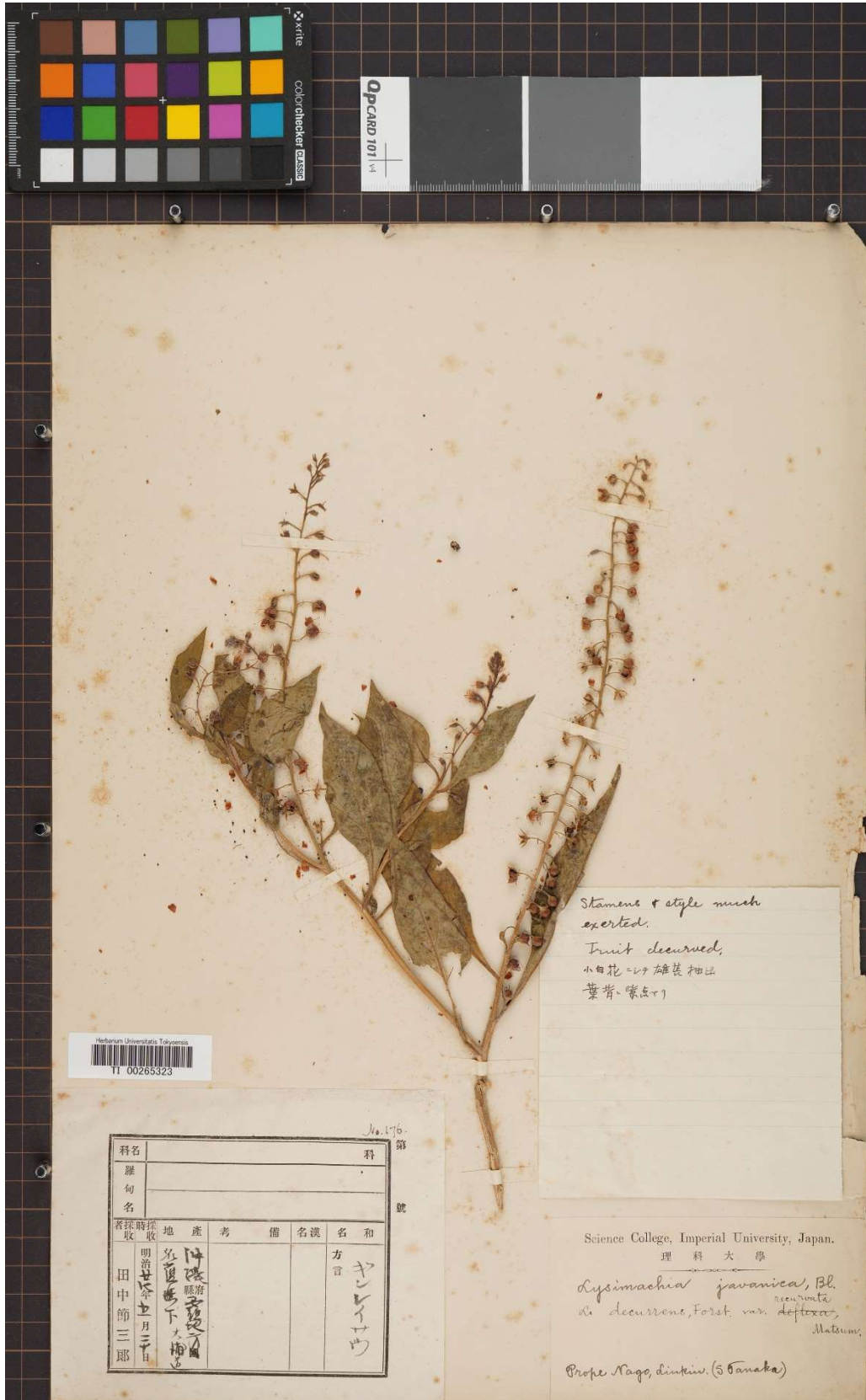


Fig. S3. Syntype of *Lysimachia decurrens* var. *recurvata* Matsum. (TI 00265323). Courtesy of the Herbarium of the University of Tokyo (TI).



Fig. S4. Lectotype of *Lysimachia formosana* Honda (TI 00081667). Courtesy of the Herbarium of the University of Tokyo (TI).



Fig. S5. Syntype of *Lysimachia formosana* Honda (TI 00265324). Courtesy of the Herbarium of the University of Tokyo (TI).



Fig. S6. Syntype of *Lysimachia formosana* Honda (TI 00265325). Courtesy of the Herbarium of the University of Tokyo (TI).