



Supplement

The following supplementary materials are available for this article: Zhang, R.-B., Deng, T., Jiang, H., Xie, D.-J., Wei, R.-X., Dou, Q.-L., Qian, Z.-M., He, L. 2024 *Paraphlomis youyangensis* (Lamiaceae), a new species from southeastern Chongqing, China. *Taiwania* 69(3): 281-287. doi: 10.6165/tai.2024.69.281

Table S1. Other *Paraphlomis* specimen examined in the analysis.

Taxon	Location	Collector	Collecting no.	Herbarium
<i>Paraphlomis albida</i>	Ningyuan, Hunan	Pei-Xiang Tan	62441	IBK
<i>Paraphlomis albida</i>	Wuyishan, Fujian	Xiao-Jie Zhu	144	AU
<i>Paraphlomis albiflora</i>	Yibin, Sichuan	Ming-Fang Zhong <i>et al.</i>	0809	SM
<i>Paraphlomis albiflora</i>	Leibo, Sichuan	Leibo Team	0884	SM
<i>Paraphlomis albotomentosa</i>	Yongshun, Hunan	Hai-Sheng He	080716087	JIU
<i>Paraphlomis albotomentosa</i>	Yongshun, Hunan	Dai-Gui Zhang	zdg1117	JIU
<i>Paraphlomis foliata</i>	Nanping, Fujian	Shui-Sheng You	831558	FJFC
<i>Paraphlomis foliata</i>	Shicheng, Jiangxi	Qi-Ming Hu	4708	IBK
<i>Paraphlomis gracilis</i>	Luxi, Hunan	Dai-Gui Zhang	4331221606290485LY	JIU
<i>Paraphlomis hirsutissima</i>	Ruili, Yunnan	Guang-Wan Hu	HGW-00147	KUN
<i>Paraphlomis hirsutissima</i>	Lijiang, Yunnan	Wen-Xiang Wu	10331	NAS
<i>Paraphlomis hispida</i>	Lingyun, Guangxi	Li-Qin Chen	92449	IBK
<i>Paraphlomis hispida</i>	Xichou, Yunnan	Lei Wu <i>et al.</i>	3820	BNU
<i>Paraphlomis intermedia</i>	Lushan, Jiangxi	Ce-Ming Tan <i>et al.</i>	13268	BH
<i>Paraphlomis intermedia</i>	Nanping, Fujian	Shui-Sheng You	801228	FJFC
<i>Paraphlomis javanica</i>	Baoting, Hainan	Kuan-Zhao Hou	73247	IBK
<i>Paraphlomis javanica</i>	Nandan, Guangxi	Zhi Huang	41096	IBK
<i>Paraphlomis kwangtungensis</i>	Pingle, Guangxi	Ke-Jian Yan	48644	IBK
<i>Paraphlomis lanceolata</i>	Sanjiang, Guangxi	Hong-Jun Wu	450226160809080LY	GXMG
<i>Paraphlomis lanceolata</i>	Guzhang, Hunan	Lin Su	4331261409060573	JIU
<i>Paraphlomis lancidentata</i>	Qianshan, Jiangxi	Ping Lei	17242	JJF
<i>Paraphlomis membranacea</i>	Malipo, Yunnan	Quan-An Wu	9961	KUN
<i>Paraphlomis membranacea</i>	Jinping, Yunnan	Xi-Wen Li	410	KUN
<i>Paraphlomis pagantha</i>	Wanning, Hainan	Kuan-Zhao Hou	73217	IBK
<i>Paraphlomis pagantha</i>	Ledong, Hainan	Xin-Qi Liu	27154	IBK
<i>Paraphlomis paucisetosa</i>	Nanning, Guangxi	Xie-Cai Huang	7185	GXMG
<i>Paraphlomis paucisetosa</i>	Nanning, Guangxi	Xiao-Hong Lu	10554	GXMG
<i>Paraphlomis reflexa</i>	Xiushui, Jiangxi	Jie Xiong	06708	LBG
<i>Paraphlomis seticalyx</i>	Damiaoshan, Guangxi	S.H.Chun	148852	NAS
<i>Paraphlomis seticalyx</i>	Dayaoshan, Guangxi	Yin-Kun Li	400943	IBK
<i>Paraphlomis setulosa</i>	Qimen, Anhui	Zhao-Wen Xue	830234	IBK
<i>Paraphlomis subcoriacea</i>	Yangshan, Guangdong	Liang Deng	263	IBK
<i>Paraphlomis subcoriacea</i>	Yizhang, Hunan	Baohan, Liang	83710	IBK

**Table S2.** Sequence information for all samples used in present study. A “/” indicates a missing sequence. Herbarium abbreviations are listed after the vouchers.

Taxon	Voucher	Location (China)	ITS	ETS	<i>rpl32-trnL</i>	<i>rps16</i>	<i>trnL-trnF</i>
<i>Matsumurella chinensis</i> 1	Y. Yang OYY00316 (KUN)	Pingxiang, Jiangxi	MW602147	MW602117	MW602021	MW602053	MW602084
<i>M. chinensis</i> 2	Y. Yang OYY00131 (KUN)	Guilin, Guangxi	MW602148	MW602118	MW602022	MW602054	MW602085
<i>Paraphlomis albida</i> var. <i>albida</i>	A. Liu et al. LK0841 (CSFI)	Ningyuan, Hunan	MW602124	MW602091	MW601996	MW602028	MW602060
<i>P. albida</i> var. <i>brevidens</i>	Y.P. Chen EM312 (KUN)	Hezhou, Guangxi	MW602130	MW602098	MW602003	MW602035	MW602067
<i>P. albiflora</i>	C.M. Tan et al. 1806393 (JJF)	Jiujiang, Jiangxi	/	MW602101	MW602006	MW602038	MW602069
<i>P. caloneura</i>	W.H. Wu et al. LHT1841 (KUN)	Napo, Guangxi	OQ627454	OQ628080	OQ628083	OQ628086	OQ628089
<i>P. coronata</i> 1	E.D. Liu et al. 3043 (KUN)	Emeishan, Sichuan	MW602137	MW602107	MW602012	MW602044	MW602075
<i>P. coronata</i> 2	C.L. Xiang 358 (KUN)	Jiangkou, Guizhou	MW602123	MW602090	MW601995	MW602027	MW602059
<i>P. foliata</i> ssp. <i>foliata</i>	S.P. Chen s.n. (KUN)	Jiangle, Fujian	/	MW602097	MW602002	MW602034	MW602066
<i>P. foliata</i> ssp. <i>montigena</i>	Y.C. Dai s.n. (KUN)	Hangzhou, Zhejiang	OM836064	OM884453	OM884456	OM884459	OM884462
<i>P. gracilis</i> var. <i>gracilis</i> 1	A. Liu LK0931 (CSFI)	Changsha, Hunan	MW602134	MW602104	MW602009	MW602041	MW602072
<i>P. gracilis</i> var. <i>gracilis</i> 2	C.L. Xiang XCL1315 (KUN)	Chongqing	MW602141	MW602111	MW602016	MW602048	MW602079
<i>P. gracilis</i> var. <i>lutienensis</i>	C.L. Xiang XCL881 (KUN)	Shibing, Guizhou	MW602131	MW602099	MW602004	MW602036	MW602068
<i>P. hirsutissima</i>	F. Zhao & G. Chen XCL2115 (KUN)	Malipo, Yunnan	OQ627453	OQ628079	OQ628082	OQ628085	OQ628088
<i>P. hispida</i>	X. Li LX200702 (GXF)	Napo, Guangxi	MW602132	MW602102	MW602007	MW602039	MW602070
<i>P. hsiwenii</i> 1	W.H. Wu et al. DD426 (KUN)	Jingxi, Guangxi	OP605346	OP609841	OP609848	OP609855	OP609862
<i>P. hsiwenii</i> 2	W.H. Wu et al. DD426 (KUN)	Jingxi, Guangxi	OP605347	OP609842	OP609849	OP609856	OP609863
<i>P. intermedia</i>	X. Zhong et al. ZX16823 (CSH)	Suichang, Zhejiang	MW602135	MW602105	MW602010	MW602042	MW602073
<i>P. javanica</i> var. <i>javanica</i> 1	Y.P. Chen s.n. (KUN)	Kunming, Yunnan	MW602121	MW602088	MW601993	MW602025	MW602057
<i>P. javanica</i> var. <i>javanica</i> 2	L.B. Jia et al. JLB0029 (KUN)	Maguan, Yunnan	MW602143	MW602113	MW602017	MW602049	MW602080
<i>P. javanica</i> var. <i>pteropoda</i>	X. Li 2020090501 (GXF)	Jingxi, Guangxi	MW602140	MW602110	MW602015	MW602047	MW602078
<i>P. jiangyongensis</i> 1	A. Liu et al. LK1104 (CSFI)	Jiangyong, Hunan	MW602128	MW602095	MW602000	MW602032	MW602064
<i>P. jiangyongensis</i> 2	A. Liu et al. LK1104 (CSFI)	Jiangyong, Hunan	MW602129	MW602096	MW602001	MW602033	MW602065
<i>P. kwangtungensis</i>	Y.P. Chen & Y. Zhao EM1391 (KUN)	Huaiji, Guangdong	MW602126	MW602093	MW601998	MW602030	MW602062
<i>P. kuankuoshuiensis</i>	Zhang et al. ZRB1509 (KUN & ZY)	Zunyi, Guizhou	MN444857	OR947697	OR947695	OR947696	MN444859
<i>P. lanceolata</i> 1	C.Z. Huang s.n. (KUN)	Guidong, Hunan	MW602145	MW602115	MW602019	MW602051	MW602082
<i>P. lanceolata</i> 2	A. Liu et al. LK0825 (CSFI)	Ningyuan, Hunan	MW602146	MW602116	MW602020	MW602052	MW602083
<i>P. lancidentata</i>	X. Zhong et al. ZX16824 (CSH)	Suichang, Zhejiang	MW602136	MW602106	MW602011	MW602043	MW602074
<i>P. longicalyx</i>	Y.P. Chen et al. EM583 (KUN)	Huanjiang, Guangxi	OK104771	OK104774	OK104778	OK104780	OK104783
<i>P. membranacea</i>	M.S. Nuraliev 1057 (MW)	Thanh Son, Phu Tho, Vietnam*	/	MW602100	MW602005	MW602037	/
<i>P. nana</i> 1	C. Xiong XC21097 (KUN)	Chengkou, Chongqing	OM836062	OM884451	OM884454	OM884457	OM884460
<i>P. nana</i> 2	C. Xiong & H.L. Zhou XC21126 (KUN)	Wushan, Chongqing	OM836063	OM884452	OM884455	OM884458	OM884461
<i>P. pagantha</i>	L.X. Yuan et al. s.n. (KUN)	Qionghai, Hainan	OP605345	OP609840	OP609847	OP609854	OP609861
<i>P. patentisetulosa</i>	C.L. Su et al. XY015 (KUN)	Xinyi, Guangdong	OQ627455	OQ628081	OQ628084	OQ628087	OQ628090
<i>P. paucisetosa</i> 1	X.X. Zhu s.n. (KUN)	Malipo, Yunnan	MW602125	MW602092	MW601997	MW602029	MW602061
<i>P. paucisetosa</i> 2	X. Li LX200704 (GXF)	Napo, Guangxi	MW602133	MW602103	MW602008	MW602040	MW602071
<i>P. reflexa</i>	Z.Z. Yang et al. s.n. (HIB)	Tongshan, Hubei	MW602122	MW602089	MW601994	MW602026	MW602058
<i>P. seticalyx</i>	A. Liu et al. LK1088 (KUN)	Longsheng, Guangxi	MW602127	MW602094	MW601999	MW602031	MW602063
<i>P. strictiflora</i>	B. Chen et al. CB05956 (CSH)	Yinjiang, Guizhou	/	OP609839	OP609846	OP609853	OP609860
<i>P. yingdeensis</i>	Q. Fan et al. 19013 (SYS)	Yingde, Guangdong	OP605348	OP609843	OP609850	OP609857	OP609864
<i>P. youyangensis</i>	Zhang et al. ZRB2531 (KUN & ZY)	Youyang, Chongqing	OR488121	OR487461	OR947694	OR947692	OR947693
<i>Phlomis fruticosa</i> L.	Y. Tong s.n. (KUN)	Shanghai, (cultivated)	MW602119	MW602086	MW601991	MW602023	MW602055
<i>Phlomooides dentosa</i> var. <i>glabrescens</i>	Y.P. Chen EM360 (KUN)	Beijing, (cultivated)	MW602120	MW602087	MW601992	MW602024	MW602056

* From Vietnam

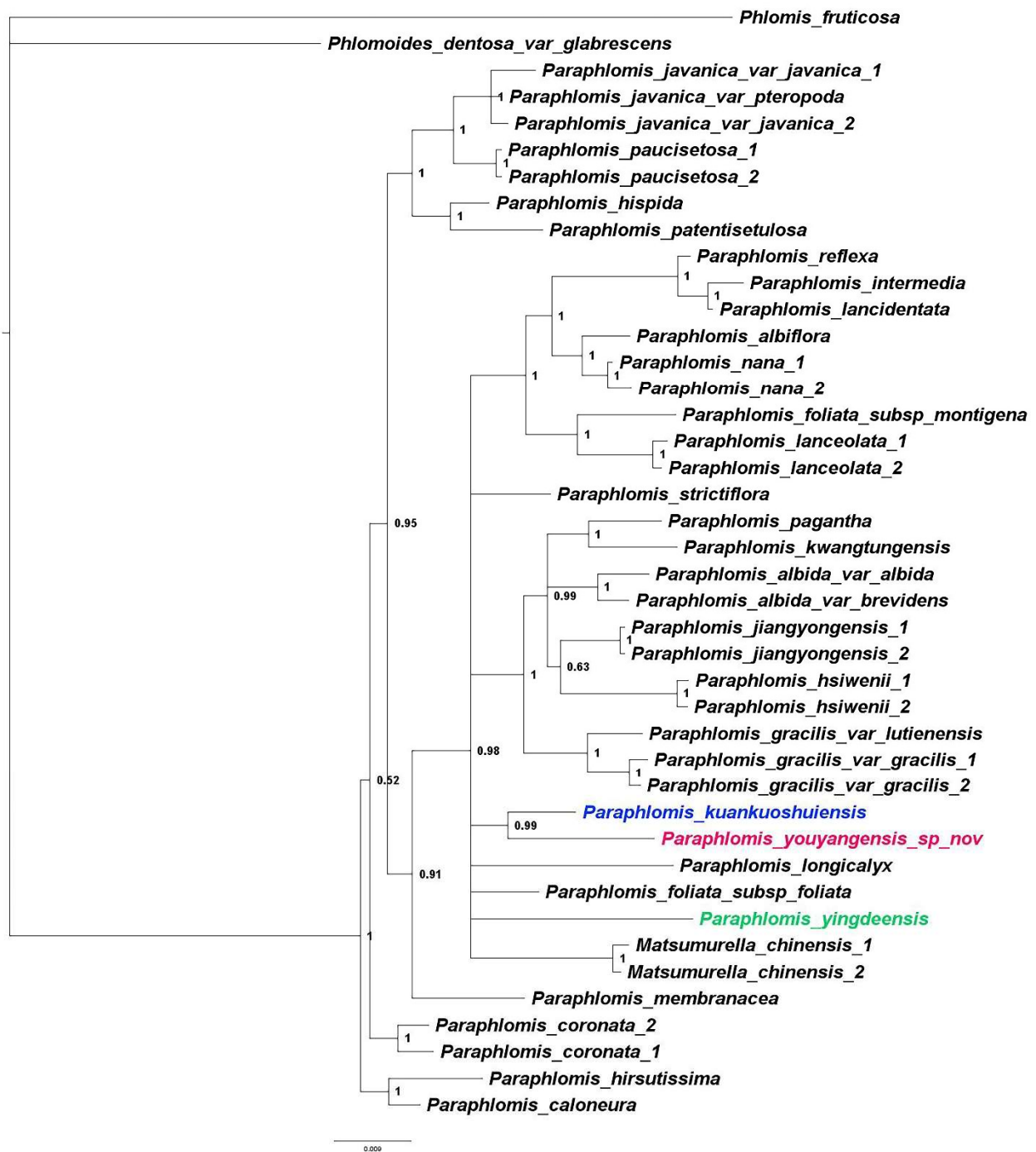


Fig. S1. Bayesian phylogenetic tree related to *Paraphlomis* including *P. youyangensis* based on the ITS and ETS sequences.

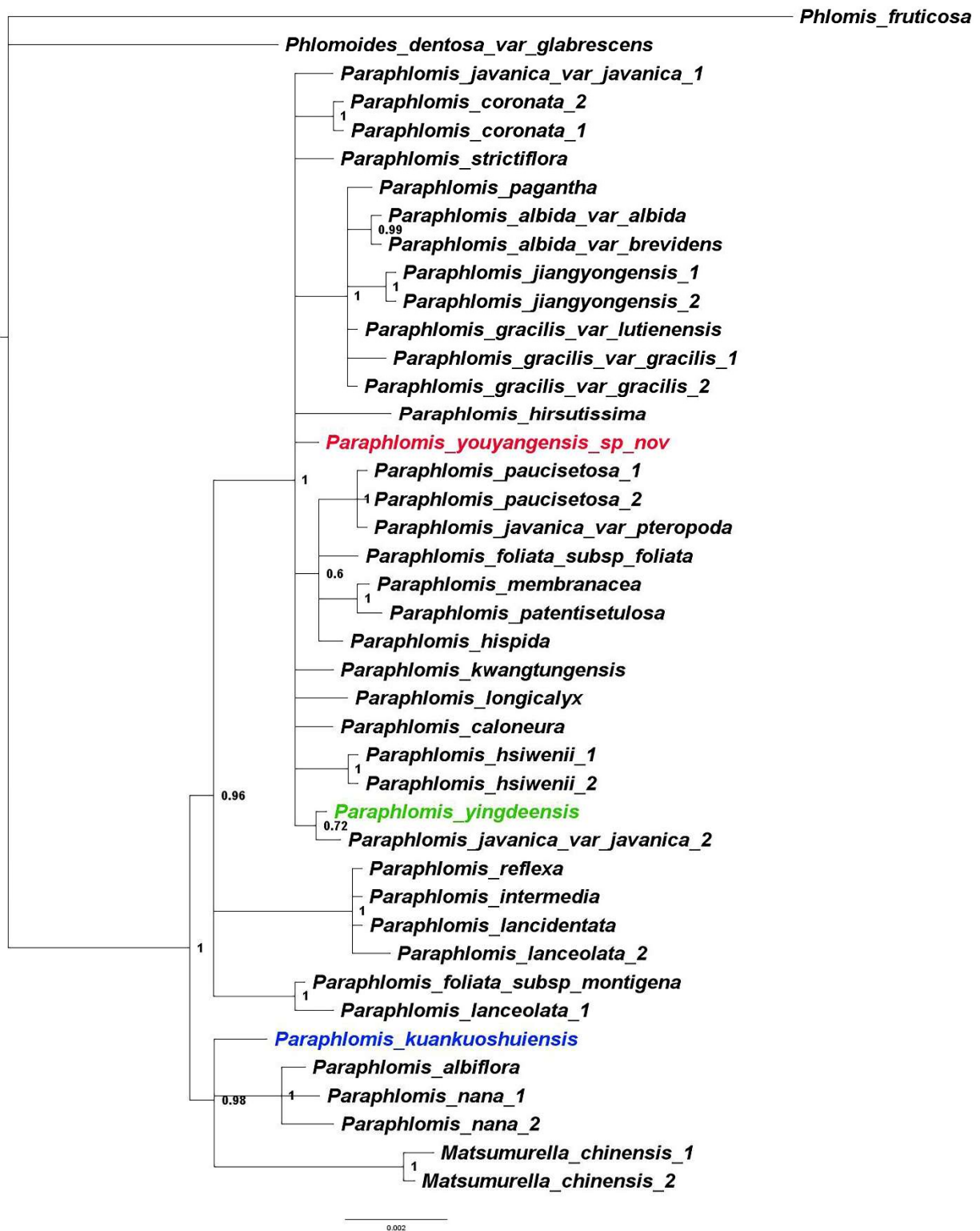


Fig. S2. Bayesian phylogenetic tree related to *Paraphlomis* including *P. youyangensis* based on the *rp132-trnL*, *rps16*, and *trnL-trnF* sequences.