



## Supplement

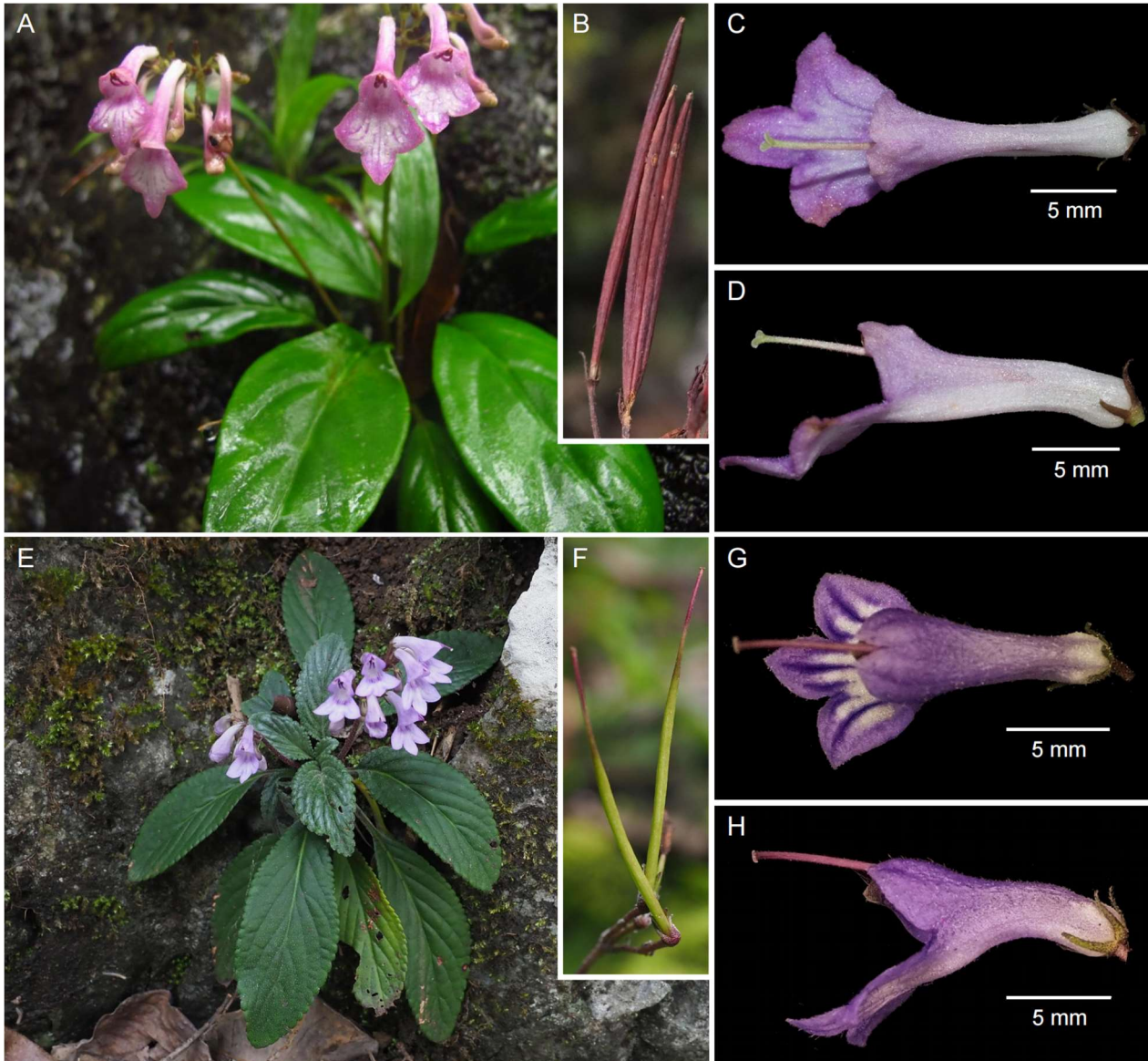
The following supplementary materials are available for this article: Shi, X.-Z., Fu, J.-X., Pan, B., Kang, M., Yang, L.-H. 2025 *Petrocodon zhonglii* (Gesneriaceae), a new species from South China. *Taiwania* 70(2): 193-199. doi: 10.6165/tai.2024.70.193

**Table S1.** Species names, voucher numbers and accession numbers of ITS and *trnL-F* sequences used in this study.

Species	Voucher number	<i>trnL-F</i>	ITS
<i>Petrocodon albinervius</i> D.X.Nong & Y.S.Huang	WF001	ON959495	ON950050
<i>Petrocodon ainsliifolius</i> W.H. Chen & Y.M. Shui	Y.M.Shui <i>et al.</i> 44071	HQ632941	HQ633038
	CWH88	KF202298	KF202291
<i>Petrocodon asterocalyx</i> F.Wen, Y.G. Wei & R.L. Zhang	FW-2013	KC904957	KC904954
<i>Petrocodon asterostriatus</i> F.Wen, Y.G.Wei & W.C.Chou	WF183	ON959497	ON950052
<i>Petrocodon chishuiensis</i> Z.B. Xin, F. Wen & S.B. Zhou	FW-2014-ml02	KF680503	KF680504
<i>Petrocodon confertiflorus</i> H.Q. Li & Y.Q. Wang	LPW2018004	MN637556	MN627906
<i>Petrocodon coriaceifolius</i> (Y.G. Wei) Y.G. Wei & Mich. Möller	M.Moeller MMO 06-913	HQ632943	HQ633040
<i>Petrocodon dealbatus</i> Hance	LJM-2003-104	GU350668	GU350636
	G12B	FJ501537	FJ501358
	LJM1209291	KR476565	KR337020
<i>Petrocodon dealbatus</i> var. <i>denticulatus</i> (W.T. Wang) W.T. Wang	Y.G.Wei 2010-03	JF697590	JF697578
<i>Petrocodon ferrugineus</i> Y.G. Wei	M.Moeller MMO 06-784	HQ632946	HQ633043
<i>Petrocodon guangxiensis</i> (Yan Liu & W.B. Xu) W.B. Xu & K.F. Chung	XWB	JX506791	JX506899
<i>Petrocodon hancei</i> (Hemsl.) A.Weber & Mich. Möller	M.Moeller MMO 08-1342	HQ632944	HQ633041
	–	KC904958	KC904955
	GDLC05	KF498253	KF498051
	SXZ030	PQ449021	PQ454503
	SXZ171	PQ449022	PQ454504
	SXZ305	PQ449023	PQ454505
<i>Petrocodon hechiensis</i> (Y.G. Wei, Yan Liu & F. Wen) Y.G. Wei & Mich. Möller	M.Moeller MMO 07-1077	HQ632942	HQ633039
	–	KR476563	KR337018
<i>Petrocodon hispidus</i> (W.T. Wang) A.Weber & Mich.Möller	CWH87	KF202300	KF202293
	CWH101	KF202301	KF202294
<i>Petrocodon hunanensis</i> X.L. Yu & Ming Li	WF190107-02	MK941180	MK941179
<i>Petrocodon jiangxiensis</i> F.Wen, L.F. Fu & L.Y. Su	WF170502	MH699398	MH699397
<i>Petrocodon integrifolius</i> (D. Fang & L. Zeng) A. Weber & Mich. Möller	M.Moeller MMO 06-865	HQ632940	HQ633037
<i>Petrocodon ionophyllus</i> F.Wen, S.Li & B.Pan	WF010	ON959496	ON950051
<i>Petrocodon leveilleanus</i> (Fedde) X.X. Bai & F. Wen	G80E	FJ501516	FJ501341
	CWH14B	KF202299	KF202292
<i>Petrocodon lancifolius</i> Fang Wen & Y.G.Wei	LPW2018031	MN637552	MN627902
<i>Petrocodon laxicymosus</i> W.B. Xu & Yan Liu	LPW2018019	MN637549	MN627899
	Wang-Hui Wu W0285	KC765117	KC765115
<i>Petrocodon longgangensis</i> W.H. Wu & W.B. Xu	LPW2013038	MN637546	MN627896
	W.B. Xu et al. 09988	KC765116	KC765114
<i>Petrocodon longitubus</i> Cong R.Li & Yang Luo	Wangmo1073	MN637543	MN627893
<i>Petrocodon lui</i> (Yan Liu & W.B. Xu) A. Weber & Mich. Möller	Y.G.Wei 8012	HQ632938	HQ633035
<i>Petrocodon mirus</i> X.Z. Shi, J.X. Fu & Li H. Yang	SXZ339	PP826278	PP839785
<i>Petrocodon mollifolius</i> (W.T. Wang) A.Weber & Mich.Möller	HEAC:LJM1108211	KR476547	KR337000
<i>Petrocodon multiflorus</i> F. Wen & Y.S. Jiang	HJ01-2	KM232660	KJ475411
<i>Petrocodon nivelolanosus</i> (D. Fang & W.T. Wang) A. Weber & Mich. Möller	M.Moeller MMO 06-861	JF697588	JF697576
<i>Petrocodon pseudocoriaceifolius</i> Yan Liu & W.B. Xu	LPW2018032	MN637547	MN627897
	Chung 1884	JX506741	JX506852
<i>Petrocodon pulchriflorus</i> Y.B. Lu & Q. Zhang	Q.Zhang 01	KX579059	KX579058
<i>Petrocodon retroflexus</i> Q. Zhang & J. Guo	–	KX579061	KX579060
<i>Petrocodon rubrostriatus</i> K.Tan, X.Q. Song & M.X. Ren	20TK0811008_1	OQ955752	OQ968808
<i>Petrocodon scopulorus</i> (Chun) Y.Z. Wang	–	GU350669	GU350637
	W.Fang 2010-02	HQ632947	HQ633044
	LJM06753	KR476567	KR337023



<i>Petrocodon subpalmatinervis</i> (W.T. Wang) F. Wen & Z.L. Li	CWH89	KF202302	KF202295
	CWH103	KF202303	KF202296
<i>Petrocodon tiandengensis</i> (Yan Liu & B. Pan) A. Weber & Mich. Möller	9413	JX506850	JX506960
<i>Petrocodon tongziensis</i> R.B. Zhang & F. Wen	Ren-Bo Zhang SBQ09383	MF872618	MF872617
<i>Petrocodon urceolatus</i> F. Wen, H.F. Cen & L.F. Fu	LPW2018029	MN637559	MN627909
<i>Petrocodon viridescens</i> W.H. Chen, Mich. Möller & Y.M. Shui	Y.M.Shui et al. 82661	HQ632939	HQ633036
	CWH41	KF202304	KF202297
<i>Petrocodon wui</i> F. Wen & R.B. Zhang	WF065	OQ716553	OQ694978
<i>Petrocodon zhonglii</i> sp. nov.	YLH426	PQ449024	PQ454506
	SXZ257	PQ449025	PQ454507
<i>Primulina eburnea</i> (Hance) Yin Z. Wang	P22908	JX506783	JX506891
<i>Primulina tabacum</i> Hance	LZ01	KF498233	KF498110



**Fig. S1.** *Petrocodon coriaceifolius* (A–D) and *P. hancei* (E–H). A & E. habit, B & F. fruits, C & G. flower top view, D & H. flower side view. Photos of *P. coriaceifolius* were taken at Daoxian, Hunan, and of *P. hancei* were taken at Pingle, Guangxi. Photos by Bo Pan (A) and Xi-Zuo Shi (B–H).



Fig. S2. Holotype (IBSC-1021453) of *Petrocodon zhonglii* sp. nov.

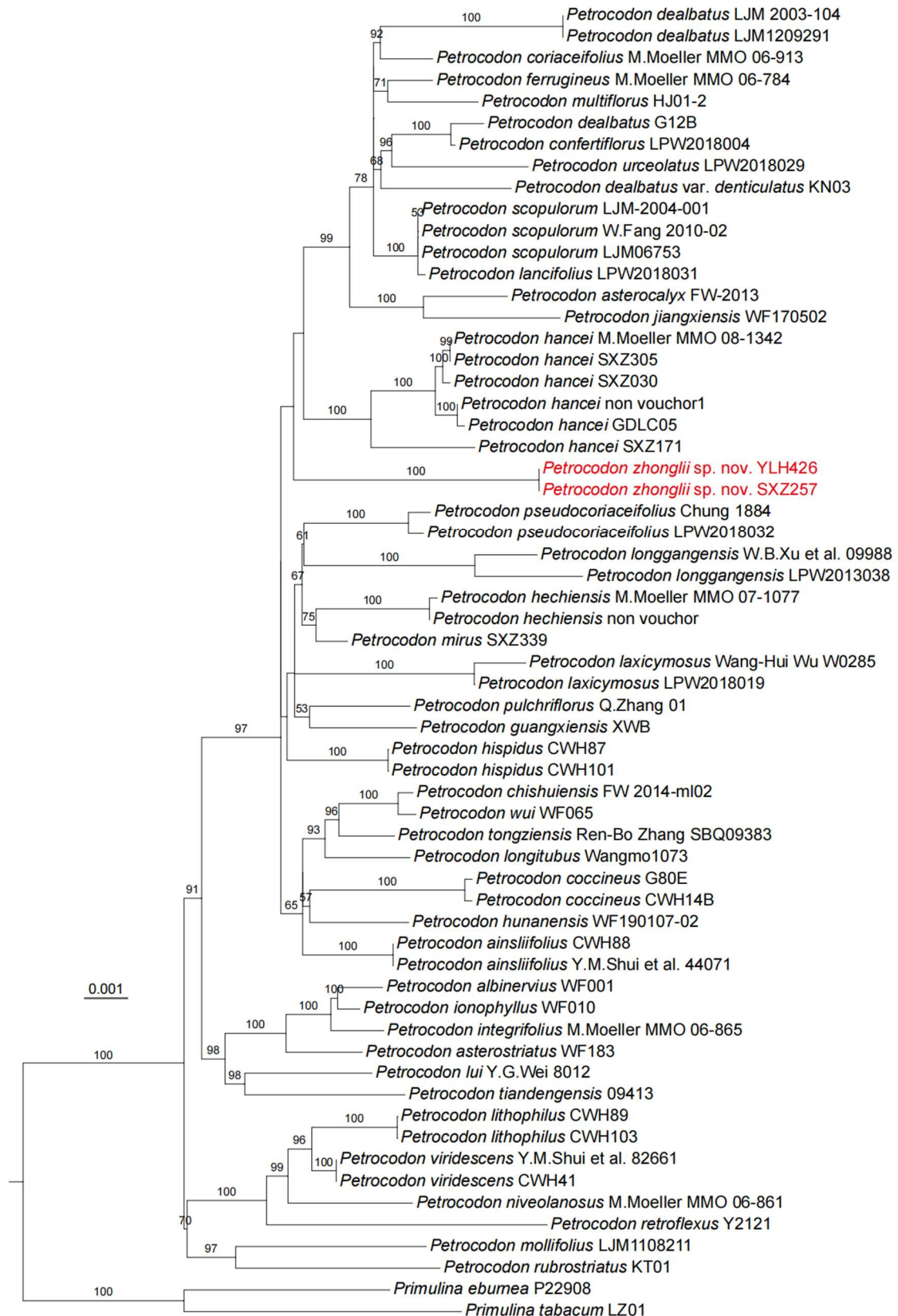
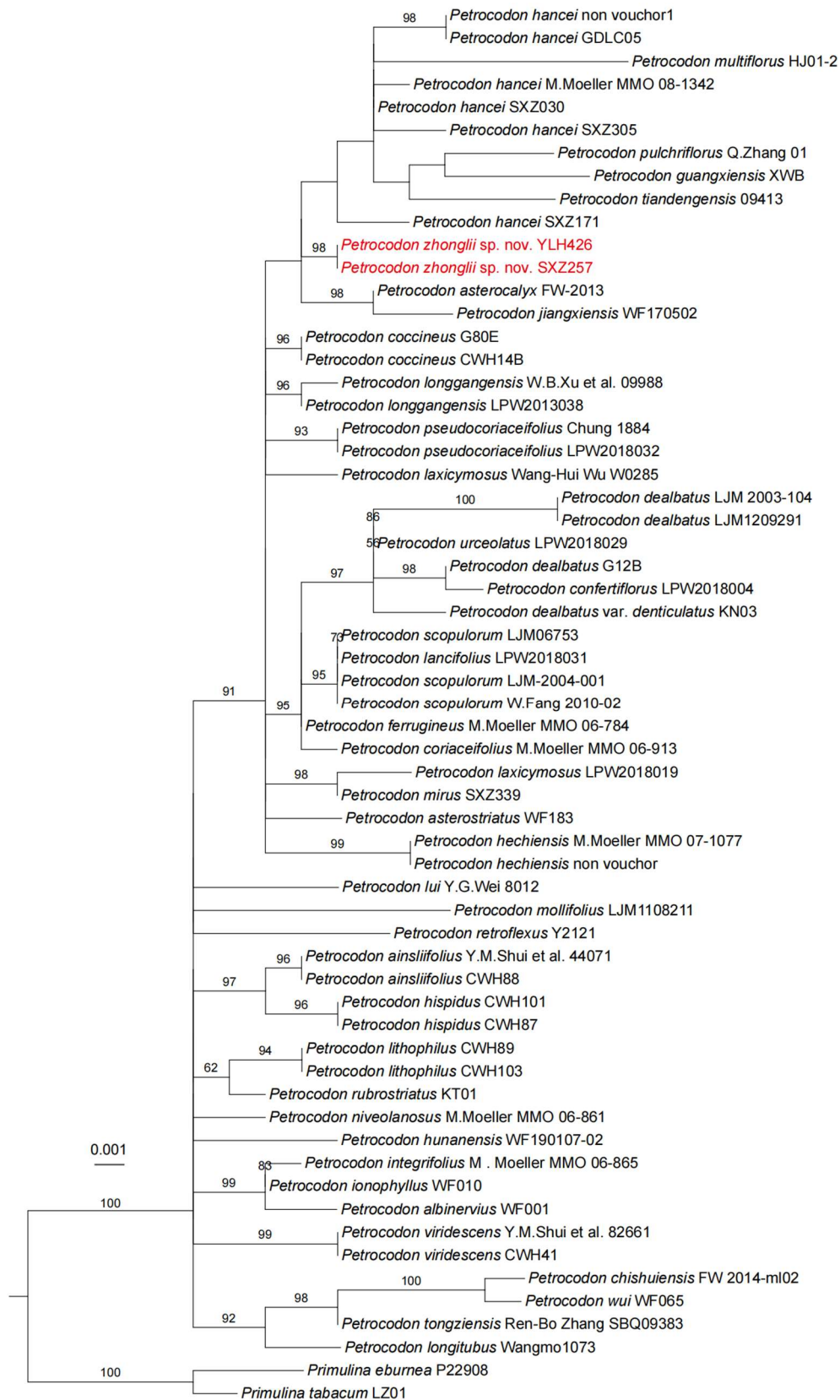


Fig. S3. Maximum likelihood (ML) tree inferred from the ITS sequence. Number above each branch is the ultrafast bootstrap approximation (UFBoot) value of the corresponding node. UFBoot values less than 50% are not shown.



**Fig. S4.** Maximum likelihood (ML) tree inferred from the *trnL-F* sequence. Number above each branch is the ultrafast bootstrap approximation (UFBoot) value of the corresponding node. UFBoot values less than 50% are not shown.