



Supplement

The following supplementary materials are available for this article: Zhang, H.-Q., Tian, T.-T., Zhang, X., Yi, S.-R., Chen, Y.-P. 2026 *Paraphlomis dabashanensis* (Lamiaceae), a new species from the Daba Mountains in Central China. *Taiwania* 71(2): 350-358. doi: 10.6165/tai.2026.71.350

Table S1. GenBank accession numbers for plastome, ITS, and ETS sequences used in this study. Accession numbers for newly generated sequences are highlighted in bold, while a “-” indicates missing data.

Taxon	Plastome	ITS	ETS
<i>Lamium album</i> L.	OR565909	-	-
<i>Leucas mollissima</i> Wall. ex Benth.	OR565912	-	-
<i>Marrubium vulgare</i> L.	OR565908	-	-
<i>Paraleonurus japonicus</i> (Houtt.) M.L. Qian, Y.P. Chen & C.L. Xiang	OR565911	-	-
<i>Paraphlomis albida</i> Hand.-Mazz. var. <i>albida</i>	OR565920	MW602124	MW602091
<i>Paraphlomis albida</i> var. <i>brevidens</i> Hand.-Mazz.	OR565938	MW602130	MW602098
<i>Paraphlomis albiflora</i> (Hemsl.) Hand.-Mazz. var. <i>albiflora</i>	OR565954	-	MW602101
<i>Paraphlomis albiflora</i> var. <i>biflora</i> (Y.Z. Sun) C.Y. Wu	OR565950	OR594010	OR576847
<i>Paraphlomis albotomentosa</i> C.Y. Wu	OR565962	OR593999	OR576835
<i>Paraphlomis baiwanensis</i> W.Y. Zhao, Y.P. Chen & Q. Fan	-	PP897029	PP897950
<i>Paraphlomis caloneura</i> K.J. Yan, Y.P. Chen & Y.F. Huang	OR565942	OQ627454	OQ628080
<i>Paraphlomis chinensis</i> (Benth.) J.C. Yuan, Y.P. Chen & C.L. Xiang	OR565926	MW602147	MW602117
<i>Paraphlomis coronata</i> (Vaniot) Y.P. Chen & C.L. Xiang	OR565918	MW602137	MW602107
<i>Paraphlomis dabashanensis</i> Hong Q.Zhang, S.R.Yi & Y.P.Chen sp. nov. 1	PX682501	PX684094	PX680576
<i>Paraphlomis dabashanensis</i> Hong Q.Zhang, S.R.Yi & Y.P.Chen sp. nov. 2	PX682502	PX684095	PX680577
<i>Paraphlomis foliata</i> (Dunn) C.Y. Wu & H.W. Li	OR565949	OR594011	MW602097
<i>Paraphlomis formosana</i> (Hayata) T.H. Hsieh & T.C. Huang	OR565953	OR594007	OR576844
<i>Paraphlomis gracilis</i> (Hemsl.) Kudô var. <i>gracilis</i>	OR565927	MW602141	MW602111
<i>Paraphlomis gracilis</i> var. <i>lutiensis</i> (Y.Z. Sun) C.Y. Wu	OR565930	MW602131	MW602099
<i>Paraphlomis hirsutissima</i> C.Y. Wu & H.W. Li	OR565958	OQ627453	OQ628079
<i>Paraphlomis hispida</i> C.Y. Wu	OR565941	MW602132	MW602102
<i>Paraphlomis hsiwenii</i> Y.P. Chen & Xiong Li	-	OP605346	OP609841
<i>Paraphlomis humilis</i> (Miq.) J.C. Yuan, Y.P. Chen & C.L. Xiang	OR565921	-	OR576876
<i>Paraphlomis intermedia</i> C.Y. Wu & H.W. Li	OR565934	MW602135	MW602105
<i>Paraphlomis javanica</i> (Blume) Prain var. <i>javanica</i>	OR565919	MW602121	MW602088
<i>Paraphlomis javanica</i> var. <i>pteropoda</i> D. Fang & K.J. Yan	OR565943	MW602140	MW602110
<i>Paraphlomis jiangyongensis</i> X.L. Yu & A. Liu	-	MW602128	MW602095
<i>Paraphlomis jinggangshanensis</i> Boufford, W.B. Liao & W.Y. Zhao	OR565956	OR594005	OR576841
<i>Paraphlomis koreana</i> S.C. Ko & G.Y. Chung	MZ673311	OQ834441	OQ848661
<i>Paraphlomis kuankuoshuiensis</i> R.B. Zhang, D. Tan & C.B. Ma	OR565939	OR594021	OR576858
<i>Paraphlomis kwangtungensis</i> C.Y. Wu & H.W. Li	OR565963	PP713070	PP706067
<i>Paraphlomis lanceolata</i> Hand.-Mazz.	OR565928	MW602145	MW602115
<i>Paraphlomis lancidentata</i> Y.Z. Sun	OR565935	MW602136	MW602106
<i>Paraphlomis longicalyx</i> Y.P. Chen & C.L. Xiang	OR565925	OK104771	OK104774
<i>Paraphlomis membranacea</i> C.Y. Wu & H.W. Li	OR565959	OR594002	MW602100
<i>Paraphlomis montigena</i> (X.H. Guo & S.B. Zhou) J.C. Yuan, Y.P. Chen & C.L. Xiang	OR565931	OM836064	OM884453
<i>Paraphlomis myrioclada</i> J.C. Yuan, Y.P. Chen & C.L. Xiang	OR565917	OR594042	OR576880
<i>Paraphlomis nana</i> Y.P. Chen, C. Xiong & C.L. Xiang	OR565913	OM836062	OM884451
<i>Paraphlomis octopus</i> Q. Fan, Y.P. Chen & Ying Liu	-	MW602126	MW602093
<i>Paraphlomis pagantha</i> Dunn	OR565933	OP605345	OP609840
<i>Paraphlomis patentisetulosa</i> C.Y. Wu	OR565932	OQ627455	OQ628081
<i>Paraphlomis paucisetosa</i> C.Y. Wu	OR565915	MW602125	MW602092
<i>Paraphlomis qingyuanensis</i> W.Y. Zhao, R.M. Wu & Q. Fan	-	PP897031	PP897952
<i>Paraphlomis reflexa</i> C.Y. Wu & H.W. Li	OR565916	MW602122	MW602089
<i>Paraphlomis seticalyx</i> C.Y. Wu	OR565940	OR594020	OR576857
<i>Paraphlomis setulosa</i> C.Y. Wu & H.W. Li	OR565960	OR594001	OR576837
<i>Paraphlomis strictiflora</i> J.C. Yuan, B. Chen & C.L. Xiang	OR565937	-	OP609839
<i>Paraphlomis subcoriacea</i> C. Y. Wu ex H. W. Li	-	PP897033	PP897954
<i>Paraphlomis szechuanensis</i> (C.Y. Wu) J.C. Yuan, Y.P. Chen & C.L. Xiang	OR565946	OR594014	OR576851
<i>Paraphlomis tubrifera</i> (Makino) J.C. Yuan, Y.P. Chen & C.L. Xiang	OR565922	OR594038	OR576875
<i>Paraphlomis wui</i> Y.P. Chen, J.C. Yuan & C.L. Xiang	PV741117	PV476765	PV478012
<i>Paraphlomis yangsoensis</i> (Y.Z. Sun) J.C. Yuan, Y.P. Chen & C.L. Xiang	OR565945	MW602142	MW602112
<i>Paraphlomis yingdeensis</i> W.Y. Zhao, Y.Q. Li & Q. Fan	OR565948	OP605348	OP609843
<i>Paraphlomis youyangensis</i> H. Jiang, R.B. Zhang & Tan Deng	-	OR488121	OR487461
<i>Phlomis fruticosa</i> L.	OR565907	MW602119	MW602086
<i>Phlomoidea dentosa</i> var. <i>glabrescens</i> (Danguy) C.L. Xiang & H. Peng	-	MW602120	MW602087
<i>Phlomoidea tuberosa</i> (L.) Moench	OR565910	-	-

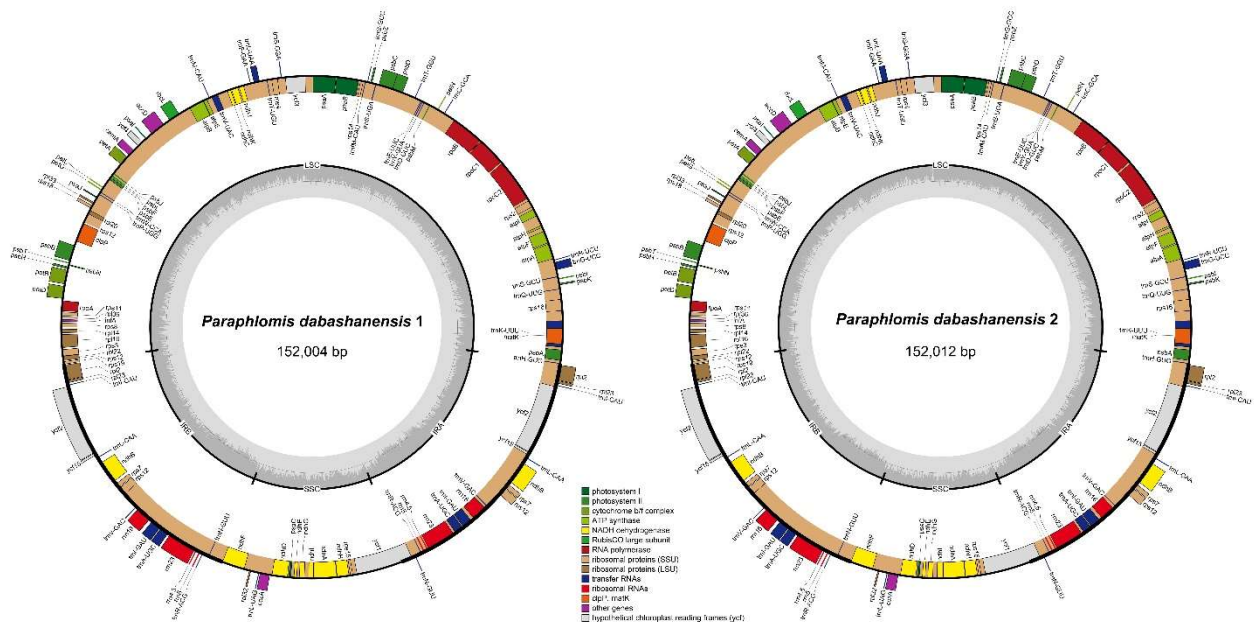


Fig. S1. Organelle genome maps of the two accessions of *Paraphlomis dabashanensis* newly sequenced in this study.