



A new species of *Myittana* (*Savasa*) (Hemiptera: Cicadellidae: Dectocephalinae) from Taiwan

You-Sheng LIN¹, Christopher H. DIETRICH^{2,*}, Shih-Feng SHIAO^{1,*}

*1. Department of Entomology, National Taiwan University, Taipei City 106332, Taiwan. YSL e-mail: d13632001@ntu.edu.tw 2. Illinois Natural History Survey, Prairie Research Institute, University of Illinois, 1816 S. Oak St., Champaign, IL 61820, USA. *Corresponding authors' emails: CHD: chdietri@illinois.edu; SFS: sfshiao@ntu.edu.tw*

(Manuscript received 31 March 2026; Accepted 27 April 2026; Online published 19 May 2026)

ABSTRACT: A new species of the bamboo-feeding leafhopper subgenus *Myittana* (*Savasa*), *Myittana* (*Savasa*) *taiwanensis* sp. nov. is described, photographed, and illustrated from Taiwan. An identification key to all the known species of the subgenus is also provided.

KEY WORDS: Bamboo-feeding, Mukariini, *Myittana* (*Savasa*) *taiwanensis*, new record, new taxa, taxonomy.

INTRODUCTION

The bamboo-feeding leafhopper subgenus *Myittana* (*Savasa*) was established by Viraktamath and Webb (2019) based on the type species *Myittana* (*Savasa*) *constricta*. Viraktamath and Webb (2019) also transferred *Benglebra bipunctata* to *Myittana* (*Savasa*). Recently, Viraktamath *et al.* (2026) described four additional new species of *Myittana* (*Savasa*) from Thailand, increasing the number of species of the subgenus to six. This subgenus is mainly characterized by the posteroventrally-directed ventral pygofer processes (Viraktamath and Webb, 2019). In addition to the shape of the aedeagus, the shape and number of ventral pygofer processes are also important diagnostic characters for the species of *Myittana* (*Savasa*).

An undescribed species with ventral pygofer processes matching the diagnosis of *Myittana* (*Savasa*) but different in shape from all other known species of the subgenus was discovered from recent surveys in the bamboo forests of Taiwan. Herein we describe it as the seventh known species of *Myittana* (*Savasa*) as well as the first record of the genus in Taiwan. The new species is photographed and illustrated in the present study, and the host plant species is identified. An identification key to all the known species of *Myittana* (*Savasa*) (males) is also provided.

MATERIALS AND METHODS

Examined specimens are deposited in the National Taiwan University, Taipei, Taiwan (NTU), National Museum of Natural Sciences, Taichung, Taiwan (NMNS), and the Illinois Natural History Survey, Champaign, Illinois, USA (INHS).

Photography and measurements of habitus were accomplished using a Leica Z16APO digital microscope equipped with a DMC5400 camera. Body length was

measured from the apex of the head to that of the folded forewing. The genital segments were removed from the abdomens and incubated at 56 °C with proteinase K for 48 hours before examination and photography. The photographs of genital segments were taken using a Leica DM2500 microscope equipped with a SGHD-3.6C camera. The stipples, short dash lines, diagonal lines, and bold lines in the line drawings represent membranous structure, structures covered by other structures, the inner side of the structure, and the outline of the structure respectively. All photographs were optimized with Adobe Photoshop CS6 software (Adobe Systems Inc). Terminology used for describing species in this study follows Dietrich (2005) and Dietrich *et al.* (2022).

RESULTS

Myittana (*Savasa*) Viraktamath and Webb, 2019: 25.
Type species. *Myittana* (*Savasa*) *constricta* Viraktamath & Webb, by original designation.

Myittana (*Savasa*) *taiwanensis* Lin, Dietrich & Shiao, *sp. nov.* 臺灣異尾葉蟬 Figs 1–3 & S1

urn:lsid:zoobank.org:pub:480B3A4B-05D2-4CA5-A3E8-FC77B6CC43F7

Holotype. TAIWAN: 1♂, Taichung, Qingshui Highway Rest Area, 24°16.9567'N, 120°36.1448'E, sweeping, 4.V.2025, K. T. Lin & Y. S. Lin leg. (NTU). **Paratypes.** TAIWAN: 1♀, same data as holotype (INHS); 2♀, same data as holotype, except 25.VI.2025, Y. S. Lin leg. (NMNS); 3♀, same data as holotype, except 25.VI.2025, K. T. Lin leg. (NTU); 2♂, Taipei, Agricultural Entomology Building, 25°0.764'N, 121°32.8647'E, sweeping, 6.V.2025, K. T. Lin leg. (NTU); 1♂, 3♀, same data, except 9.V.2025, Y. S. Lin leg. (INHS); 3♀, same data, except 13.V.2025, Y. S. Lin leg. (NTU); 1♂, same data, except 26.VI.2025, Y. S. Lin leg. (INHS); 1♂, same data, except 29.VI.2025, K. T. Lin leg. (NMNS); 1♂, 2♀, same data, except 30.VI.2025, K. T.

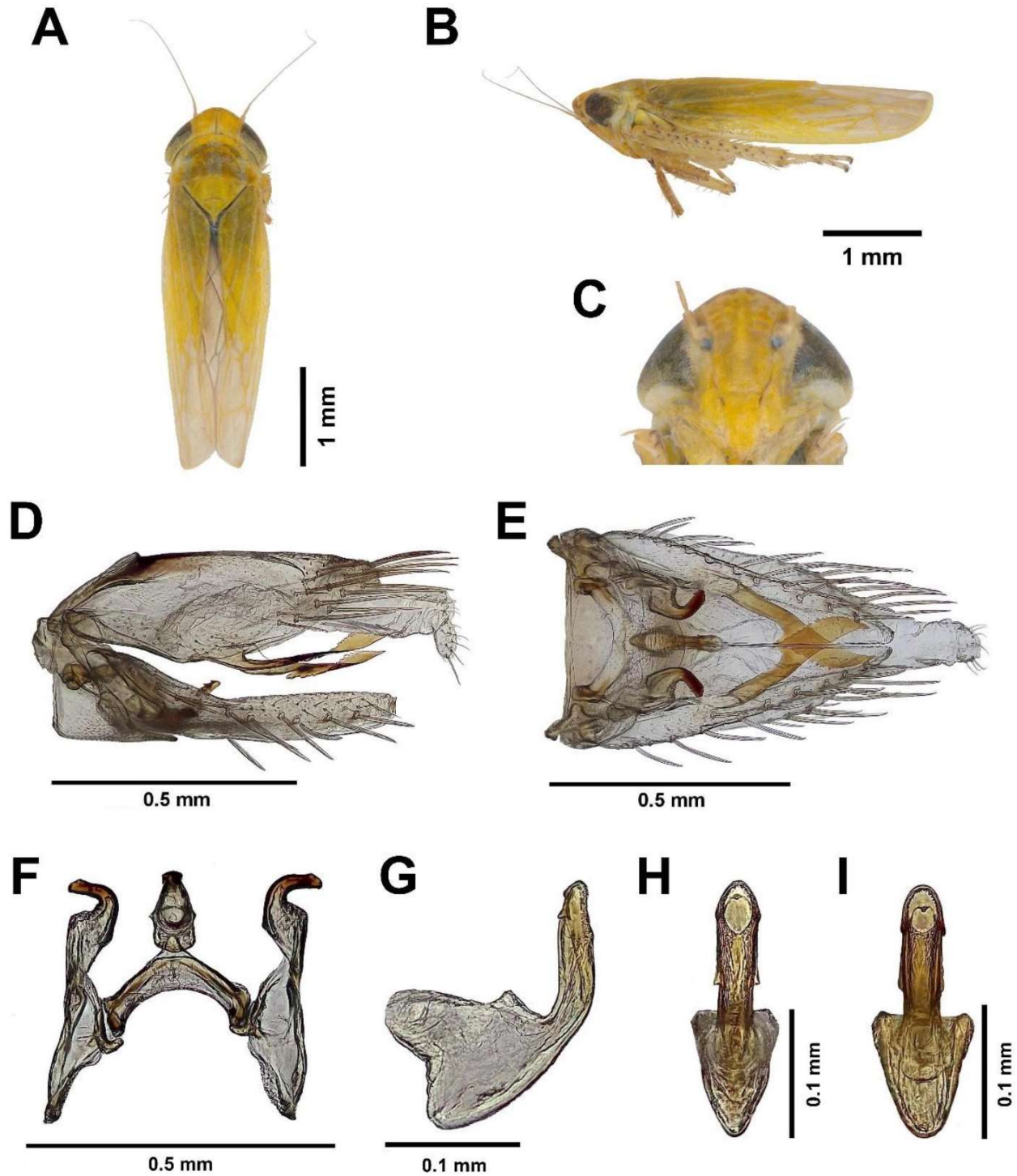


Fig. 1. *Myittana (Savasa) taiwanensis* sp. nov. **A.** Habitus, dorsal view. **B.** Habitus, left lateral view. **C.** Face, ventral view. **D.** Male genital capsule, left lateral view. **E.** Male genital capsule, ventral view. **F.** Male genitalia, ventral view. **G.** Aedeagus, left lateral view. **H.** Aedeagus, posterior view. **I.** Variation of aedeagus, posterior view.

Lin leg. (NMNS); 4♂, 1♀, Keelung, 25°7.50'N, 121°43.40'E, sweeping, 29.VI.2025, K. T. Lin leg. (NTU); 2♂, 1♀, New Taipei City, Jinshan, 25°13.2394'N, 121°37.6612'E, sweeping, 29.VI.2025, K. T. Lin leg. (NTU); 2♀, New Taipei City, Ruifang, 25°6.4448'N, 121°49.439'E,

sweeping, 14.VII.2025, K. T. Lin leg. (NTU); 1♀, Taoyuan, Longtan, 24°51.2398'N, 121°13.2168'E, sweeping, 21.VII.2025, K. T. Lin leg. (NTU); 1♀, Taoyuan, Zhongli, 24°58.3609'N, 121°13.6146'E, sweeping, 21.VII.2025, K. T. Lin leg. (NTU).

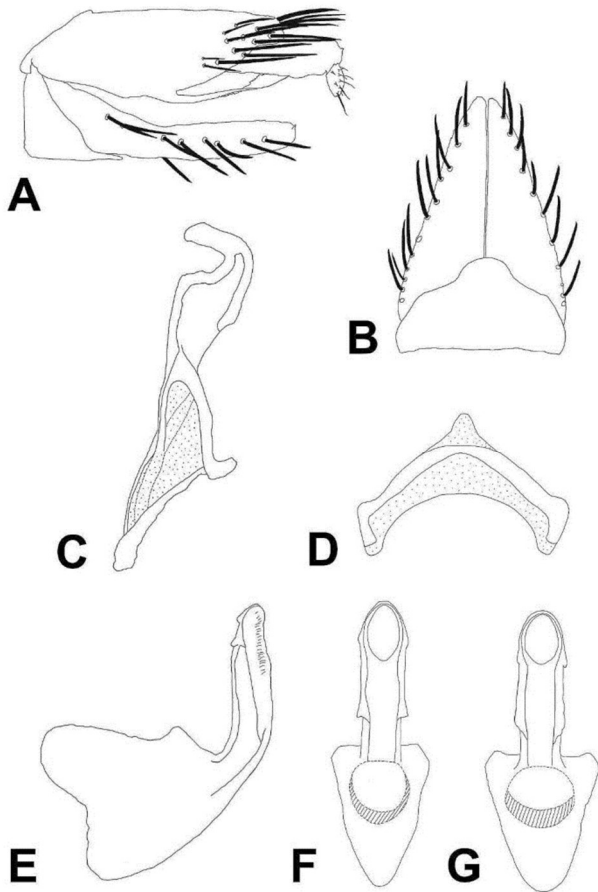


Fig. 2. Male terminalia of *Myittana (Savasa) taiwanensis* sp. nov. **A.** Genital capsule, left lateral view. **B.** Valve and subgenital plates, ventral view. **C.** Style, ventral view. **D.** Connective, ventral view. **E.** Aedeagus, left lateral view. **F.** Aedeagus, posterior view. **G.** Variation of aedeagus, posterior view.

Diagnosis. Pale greenish yellow, with five whitish longitudinal bands on pronotum. Male pygofer with single pair of serrated-knife-like ventral processes. Connective with arms forming semicircle, stem short. Style apophysis without subapical tooth. Aedeagal shaft robust and curved dorsally almost at right angle with two pairs of small dorsal processes subapically and a lateral flange on each side medially.

Description. Length, male 3.4–3.8 mm ($n = 6$); female 3.6–4.0 mm ($n = 6$). General color pale greenish yellow. Crown with a whitish long triangular patch along median line; frontoclypeus with several yellowish brown transverse bands next to a yellowish brown longitudinal stripe on both sides of median line. Pronotum with five whitish longitudinal stripes. Forewing pale greenish yellow with venation white in basal 2/3 and transparent with venation pale greenish yellow in apical 1/3. Legs yellowish white with bases of hind tibia macrosetae black.

Male pygofer with a pair of preapically expanded serrated-knife-like ventral processes crossing each other apically in ventral view; macrosetae sparse and restricted

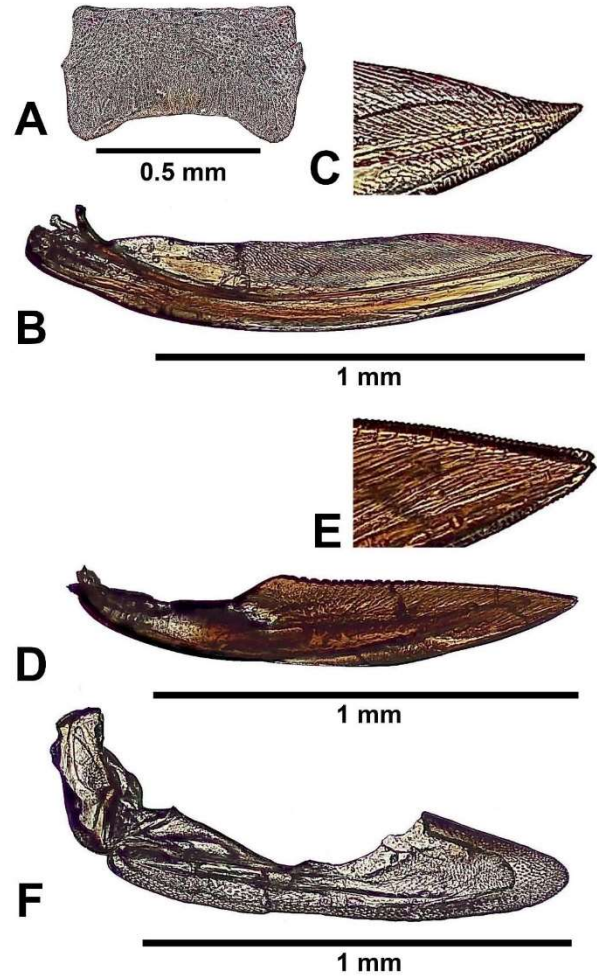


Fig. 3. Female terminalia of *Myittana (Savasa) taiwanensis* sp. nov. **A.** Abdominal sternite VII, ventral view. **B.** First valvula, left lateral view. **C.** Detail of first valvula, left lateral view. **D.** Second valvulae, left lateral view. **E.** Detail of second valvulae, left lateral view. **F.** Gonoplac, left lateral view.

to apical part of lobe. Subgenital plate triangular, elongate, as long as pygofer, lateral margin straight in ventral view; macrosetae uniseriate on lateral margin. Connective with arms forming a semicircle with a short stem. Style longer than connective, apophysis digitiform, without subapical tooth. Aedeagal atrium robust in lateral view, narrowly triangular in posterior view, slightly wider than shaft dorsally; shaft cylindrical, nearly straight, extended dorsad at nearly right angle to atrium in lateral view, with two pairs of small dorsal teeth subapically and a short lateral longitudinal flange on each side medially, flanges sometimes indistinct and somewhat asymmetrical; gonopore apical on ventral surface.

Female abdominal sternite VII more than two times wider than median length, posterior margin concave with middle section straight. Ovipositor with first valvula broad laterally, slightly curved dorsad, dorsal sculpture extended to margin, mostly obliquely strigate transitioning to imbricate distally, ventroapical sculpture



irregularly strigate; second valvulae moderately slender and curved slightly dorsad, basal fused section without distinct dorsal hump near base, shorter than toothed distal blades, distal blades slightly broadened then tapered apically, with ca. 13 denticulate quadrate teeth in basal 1/2 and numerous small denticulations in apical 1/2.

Host Plant. *Bambusa dolichoclada* Hayata.

Etymology. The species name is a Latin adjective derived from the type locality, Taiwan.

Remarks. The new species is quite different from the six previously described species of the subgenus. It differs from the remaining species in having the pygofer with a single pair of elongate, blade-like processes and the aedeagus broad basally in lateral view with the shaft simple and cylindrical with the gonopore relatively short on ventral surface as in the case of *M. (S.) bipunctata* and *M. (S.) tuberculata*. In the remaining species of the subgenus (*alata*, *constricta*, *duvidha*, and *unica*) the gonopore is elongate and often margined by a sclerotized rim (as in *unica*). Previous authors (Viraktamath and Webb, 2019) listed bamboos as host plants for species of *Myittana*. Here we provide a specific identification of a host plant of the genus for the first time.

ACKNOWLEDGMENTS

We would like to express our sincere gratitude to Prof. Ming-Chung Chiu (NTU, Taiwan) for providing the photographic equipment and suggestions on photography. We are grateful to Dr. Hsien-Tzung Shih (TARI, Taiwan), Kai-Ti Lin (NTU, Taiwan), and Yen-Min Lin (NTU, Taiwan) for their assistance in collecting specimens. We also thank Dr. Chi-Feng Lee (TARI, Taiwan) and Bao-Cheng Lai (NMNS, Taiwan) for their permission of examining and loaning specimens under their care. Two anonymous referees provided constructive comments that improved the manuscript. This study was funded by Taiwan's National Science and Technology Council [grants to the corresponding author: 113-2621-B-002-004, 114-2640-B-002-002] and Animal and Plant Health Inspection Agency, Ministry of Agriculture [grant to the corresponding author: 114AS-5.3.3-BQ-01(2)].

Key to species of *Myittana (Savasa)* (males)

(Modified and updated from Viraktamath and Webb (2019))

1. Pygofer with more than one pair of ventral processes 2
- Pygofer with only one pair of ventral processes (Fig. 1D, E) 4
2. Pygofer with four pairs of ventral processes; aedeagal shaft with wing-like lateral laminate processes
..... *M. (S.) alata* Viraktamath, Dietrich & Yeshwanth
- Pygofer with two pairs of ventral processes; aedeagal shaft without wing-like lateral laminate processes 3
3. Ventral processes of pygofer elongate, subequal, directed posteriorly in lateral view; style apophysis with subapical tooth; aedeagal shaft with two pairs of tooth-like subapical lateral processes
..... *M. (S.) tuberculata* Viraktamath, Dietrich & Yeshwanth
- Ventral processes of pygofer short, unequal, directed ventrally in lateral view; style apophysis avicephaliform; aedeagal shaft without subapical lateral processes
..... *M. (S.) duvidha* Viraktamath, Dietrich & Yeshwanth
4. Ventral processes of pygofer bifurcate apically; aedeagus extended near base posteriorly and then dorsally
..... *M. (S.) bipunctata* (Mahmood & Ahmed)
- Ventral processes of pygofer expanded but not bifurcate apically (Fig. 1D, E); aedeagus not extended at base posteriorly and then dorsally (Fig. 1G) 5
5. Aedeagal shaft in lateral view broad basally then narrowed distally, gonopore elongate; aedeagal shaft constricted at base in posterior view 6
- Aedeagal shaft of uniform width, gonopore rounded; aedeagal shaft not constricted at base in posterior view (Fig. 1H, I)
..... *M. (S.) taiwanensis* sp. nov.
6. Style apophysis with subapical tooth
..... *M. (S.) unica* Viraktamath, Dietrich & Yeshwanth
- Style apophysis without subapical tooth
..... *M. (S.) constricta* Viraktamath & Webb

LITERATURE CITED

- Dietrich, C.H.** 2005 Keys to the families of Cicadomorpha and subfamilies and tribes of Cicadellidae (Hemiptera: Auchenorrhyncha). *Fla. Entomol.* **88(4)**: 502–517.
- Dietrich, C.H., Dmitriev, D.A., Takiya, D.M., Thomas, M.J., Webb, M.D., Zahniser, J.N., Zhang, Y.** 2022 Morphology-based phylogenetic analysis of Membracoidea (Hemiptera: Cicadomorpha) with placement of fossil taxa and description of a new subfamily. *Insect Syst. Diver.* **6(5)**: 1–30.
- Viraktamath, C.A., Webb, M.D.** 2019 Revision of the bamboo leafhopper tribe Mukariini (Hemiptera: Cicadellidae: Deltocephalinae) from the Indian subcontinent with description of new genera and species. *Zootaxa* **4547 (1)**: 1–69.
- Viraktamath, C.A., Dietrich, C.H., Yeshwanth, H.M.** 2026 New genera and species of bamboo leafhopper tribes Mukariini and Punctulini (Hemiptera: Cicadellidae: Deltocephalinae) in Thailand. *Zootaxa* **5741(1)**: 1–48.

Supplementary materials are available from Journal Website