



Supplement

The following supplementary materials are available for this article: Zhao, X., Ya, J., Guo, Z., Liu, C., Zhang, W., Peng, Q., Yang, H., Zhang, T., Wang, Y. 2026 *Aristolochia pendulistoma*, a new species of Aristolochiaceae from Nujiang Canyon, Yunnan, China. *Taiwania* 71(3): 531-537. doi: 10.6165/tai.2026.71.531

Table S1. Additional specimens examined:

***Aristolochia obliqua*:** CHINA. Yunnan Province, Nujiang Lisu Autonomous Prefecture, Gongshan Derung and Nu Autonomous County, Qiqi Township, montane humid evergreen broad-leaved forest, 27°43'N, 98°34'E, 1935 m a.s.l., 23 April 2022, stems, leaves and flowers, *J.D. Ya et al.* 22CS21827 (KUN [1590651!]); same county, thickets in forest, 2355 m a.s.l., 25 May 2011, stems, leaves and flowers, *T. Zhang et al.* 11CS2755 (KUN [1300557!]); same county, roadside mixed broad-leaved forest, 1900 m a.s.l., 8 May 1979, stems, leaves and flowers, *Nujiang Exped. Team 790054* (KUN [0433153!]); same county, 2017 m a.s.l., 19 April 2018, *H. Li & H.B. Bai* 533324180419042LY (SABG [009277!]); same county, 1952 m a.s.l., 19 May 2018, *H.B. Bai & X. He* 533324180519311LY (SABG [009159!]).

***Aristolochia sanheensis*:** CHINA. Yunnan Province, Nujiang Lisu Autonomous Prefecture, Lushui City, Luzhang Township, Sanhe Village, 25°53'N, 98°46'E, 2200 m a.s.l., 9 March 2024, flowers, *J.-Z. Liu et al.* 2024030901 (SWFC!); same township, Bainiaogu Valley, 25°56' N, 98°44' E, 1988 m a.s.l., *Y.F. Wang, Z.R. Guo & X.J. Zhao* GZR-130 (CSH!).

***Aristolochia cangshanensis*:** CHINA. Yunnan Province, Yangbi County, Cangshan Mountain, Sancha River, 25°41'49" N, 100°02'55" E, 2239 m a.s.l., 23 April 2019, *X.X. Zhu et al.* ZXX19353 (CSH [0164770!]); same county, Xueshanhe Hydropower Station Dam, 25°41' N, 100°03' E, 2322 m a.s.l., in understory shrubs dominated by *Osmanthus delavayi*, vine, fl., 15 April 2023, *C. Liu, W. Zhang, Z.R. Ye & W.B. Huang* 23CS24793 (KUN [1595177!]).

***Aristolochia forrestiana*:** CHINA. Yunnan Province: Baoshan City, Longyang District, Baihualing Nature Reserve, 20 April 2017, *X.X. Zhu et al.* ZXX17049 (CSH[0141369!]); Baoshan City, Huangzhu River, roadside, 25°17' N, 98°45' E, 2379 m a.s.l., vine, 28 April 2022, *Y.H. Luo et al.* LYH02200043 (KUN[1591644!]); Baoshan City, 2239 m a.s.l., 27 October 2014, *Z.W. Wang, B. Shen & X.X. Zhu* WZW08162 (CSH[0041303!]).



Fig. S1. Holotype specimen of *Aristolochia pendulistoma* deposited at KUN (Herbarium, Kunming Institute of Botany, Chinese Academy of Sciences), barcode KUN1706790.

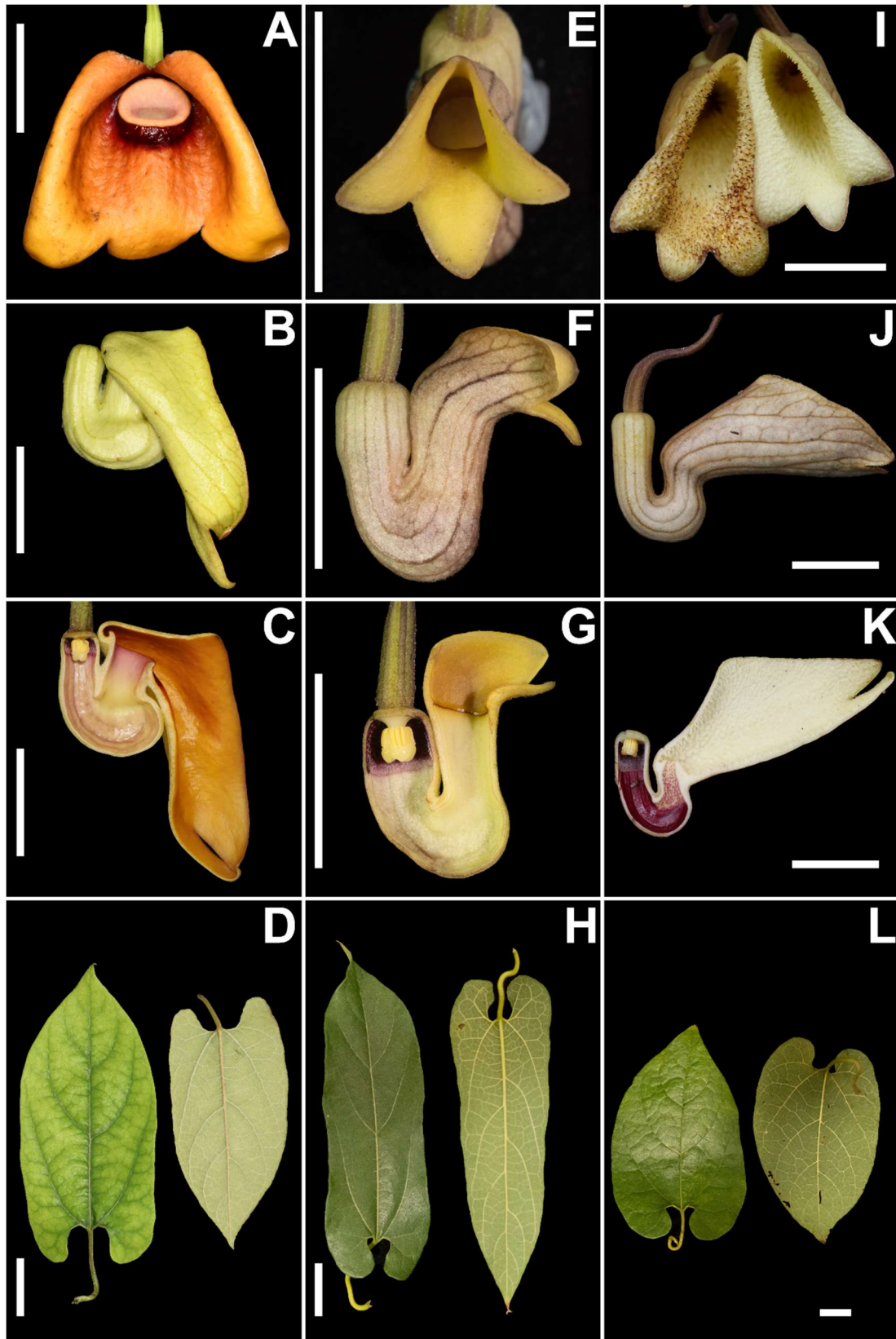


Fig. S2. Comparison of *Aristolochia pendulistoma* (A–D), *A. obliqua* (E–H), and *A. sanheensis* (I–L) in selected floral and leaf characters. A, E, I. Calyx limb, frontal view. B, F, J. Perianth, lateral view. C, G, K. Longitudinally dissected perianth, showing the adaxial side of the tube. D, H, L. Leaves. Scale bars = 2 cm.

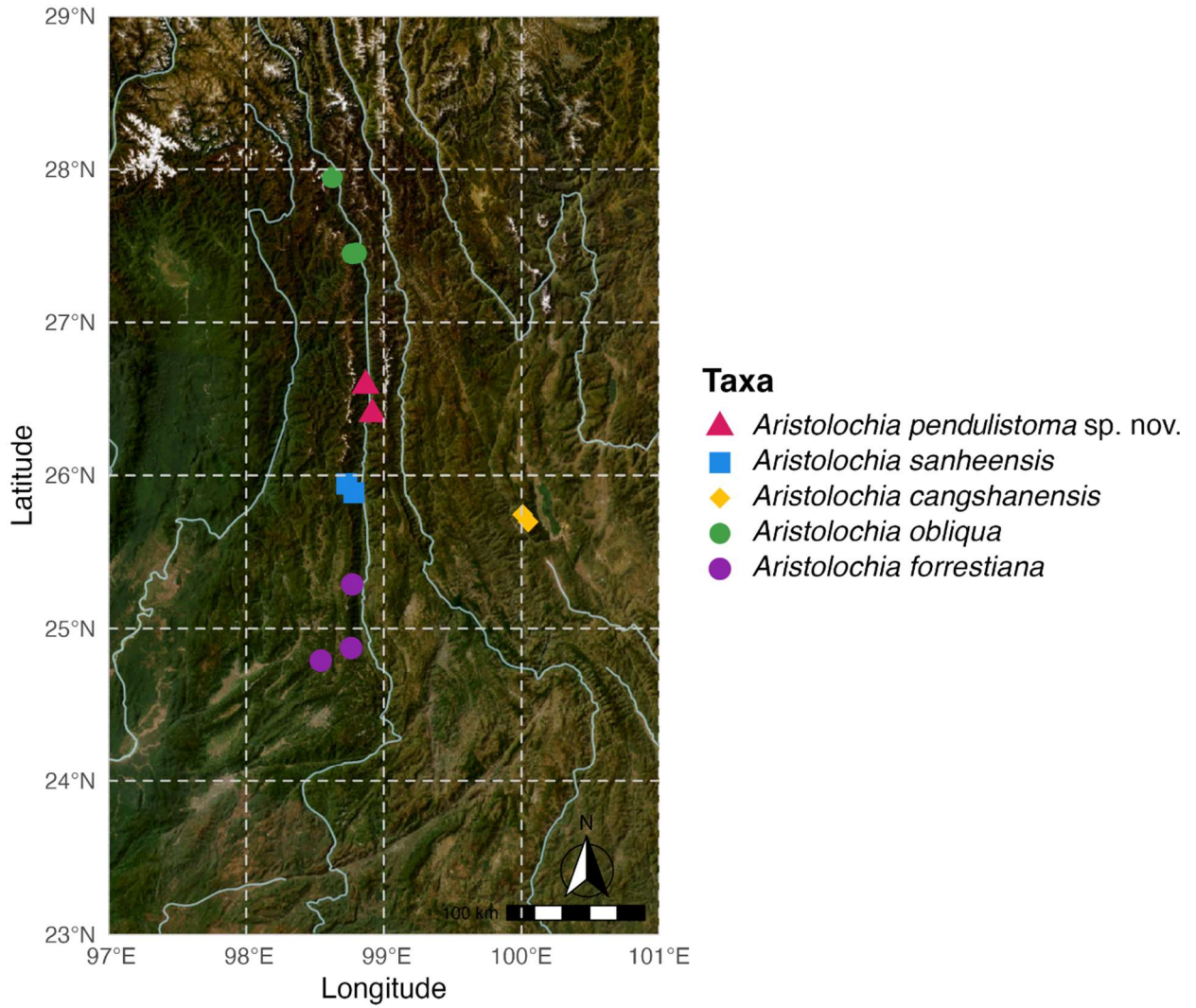


Fig. S3. Distribution map of *Aristolochia pendulistoma* and other *Siphisia* species known from the Nujiang Canyon region.